

modular Caseworks



Specification Guide

modular**Caseworks**

Designed to meet your project specifications

Hamilton Sorter's modular**Caseworks** is a manufactured laminate product that gives designers and end-users a modular, flexible and durable alternative to built in millwork.

Hamilton Sorter products are designed to meet the rigorous conditions of today's work environment.

For over 40 years, Hamilton Sorter products have been designed and manufactured to provide the very finest in modular, flexible and durable solutions for the commercial workplace.

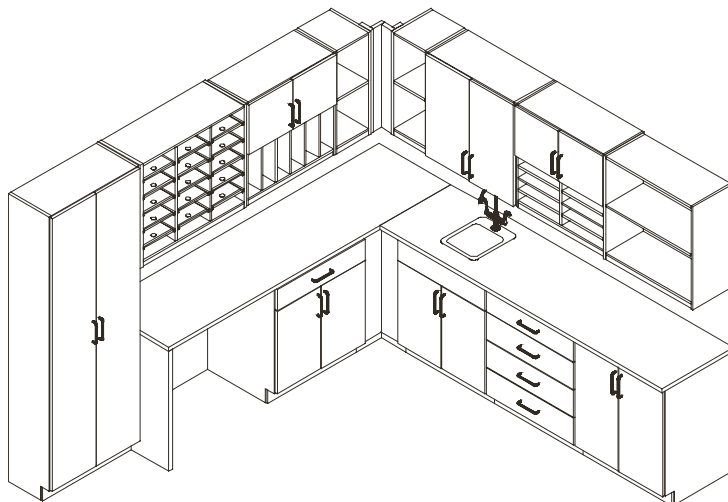
All backed with Hamilton Sorter's Limited **Lifetime Warranty**.

Construction

- ◆ Cabinets are constructed of 3/4" thick industrial grade 40-50 lb. substrate, double-faced melamine.
- ◆ All exposed edges are covered with 2mm PVC edge banding.
- ◆ Work surfaces are constructed of 1 1/16" thick high-pressure laminate (HPL) with industrial grade 40-50 lb. substrate backed with a .027 phenolic backer.
- ◆ All panels are connected with Hafele mini-fix cam hidden fastener system with metal-to-metal connection points.
- ◆ Parts are drilled using a 32mm hole drilling via computer controlled point-to-point machines for insured uniformity and consistency.
- ◆ Our easy-to-install rail mounted wall cabinets provide precise height and depth adjustments for clean installation and the look of custom millwork.
- ◆ Hamilton Sorter's unique adjustable shelf system utilizes .90-gauge polyethylene shelves with full-width indexing and adjusts on 1" increments on our exclusive full depth channel guides.
- ◆ Hamilton Sorter uses only the highest quality hardware, such as full extension ball bearing slides and concealed tool-less hinges for a lifetime of worry free operation; as well as multiple handle pull options allowing you to personalize your selection.

Table of Contents

HAMILTON SORTER'S GREEN POLICY	2
LEEDS CREDIT CALCULATION	3
BASE CABINETS	4
How to Specify	
Product Line	
STORAGE CABINETS	12
How to Specify	
Product Line	
WALL CABINETS	15
How to Specify	
Product Line	
CORNER CABINETS.	20
How to Specify	
Base Corner Cabinet Products	9
Wall Corner Products	19
WORK SURFACES.	24
How to Specify	
Product Line	
BLACK SPLASH	26
How to Specify	
Product Line	
ACCESSORIES	28
How to Specify	
Product Line	
SELECTING SORTER SHELVES ACCESSORIES.	31
HANDLES	32
LAMINATES	32
WARRANTY	BACK COVER



Green

Hamilton Sorter's Commitment to the Environment

We recognize our responsibility in maintaining and improving our environment. Through the use of recycled materials used to produce our products to our waste reduction programs, our company is continually improving our methods in the use and disposal of material.

- ◆ We use Particleboard and MDF which are fabricated from recycled wood waste material or fiber generated from wood residue left behind by lumber harvesting and processing.
- ◆ The cardboard packaging material utilized is made from recycled material.
- ◆ Unusable pallets are recycled.
- ◆ We work with customers to reduce the amount of packaging materials required for shipping.
- ◆ All Aluminum scrap is recycled.
- ◆ Adhesives used when laminating are a water-based alternate to solvent-based adhesives.
- ◆ Products meeting low VOC emissions are utilized.
- ◆ Powder coat paint is used on all metal surfaces which is waste free and does not require solvents.

We are pleased to announce that the GREENGUARD Environmental Institute has recognized Hamilton Sorter's conservation efforts. We have received GREENGUARD's Children and School Product Certification for low emitting products and materials under the standards of the Institute. Hamilton Sorter also has its' product tested every quarter to verify that it meets these standards.

GREENGUARD Children & Schools Certified

Achieve LEED® Credits With Hamilton Sorter Products

All Hamilton Sorter products are GREENGUARD Children & Schools Certified. Our products are made from an Environmentally Preferable Product (EPP) which contains 100% recycled and recovered wood waste or fiber generated from wood residue, including sawdust and shavings (100% pre-consumer).

Hamilton Sorter products meet and exceed the following requirements for LEED-CI (commercial interiors) and LEED for Schools and are applicable to tenant improvement of new or existing office space and could help you achieve the following credits on your project.

Materials and Resource	LEED Requirements	Credit
4.1 RECYCLED CONTENT, 10% (POST-CONSUMER + 1/2 PRE-CONSUMER)	Sum of post-consumer recycled content plus 1/2 of the pre-consumer content constitutes at least 10% (based on cost) of the total value of the materials in the project.	1 POINT
4.2 RECYCLED CONTENT, 20% POST-CONSUMER + 1/2 PRE-CONSUMER)	Sum of post-consumer recycled content plus 1/2 of the pre-consumer content constitutes an additional 10% beyond MR Credit 4.1 (total of 20%, based on cost) of the total value of the materials in the project.	1 POINT IN ADDITION TO MR CREDIT 4.1
4.5 LOW-EMITTING MATERIALS, SYSTEMS FURNITURE AND SEATING	GREENGUARD Indoor Air Quality Certified	1 POINT

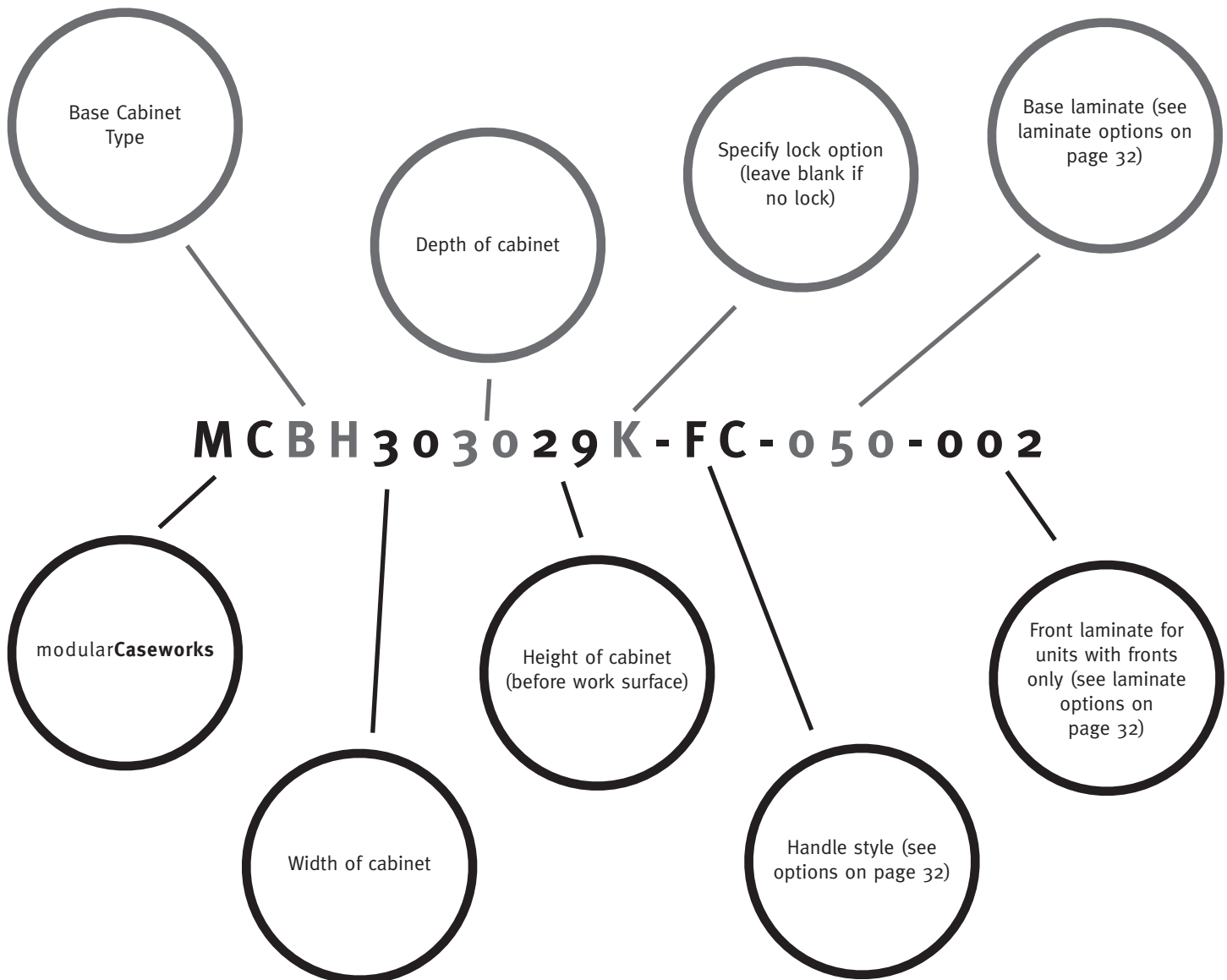
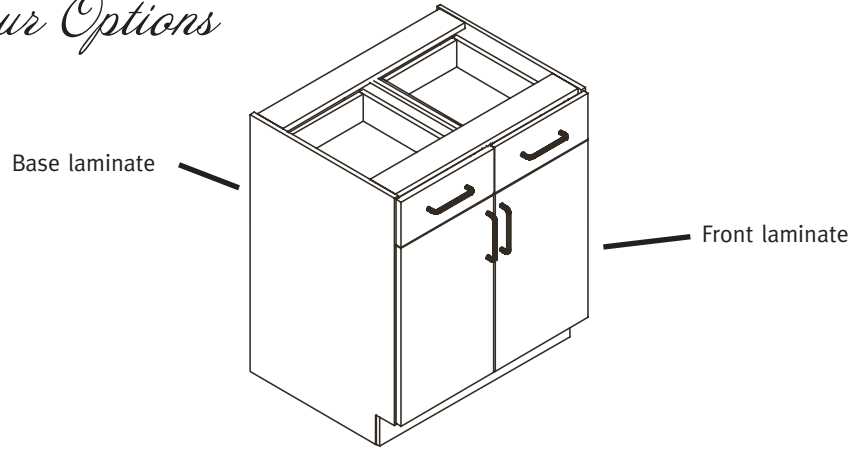
Depending on your project's location, Hamilton products may be able to contribute to these additional points.

5.1 REGIONAL MATERIALS, 10% MANUFACTURED REGIONALLY	Building materials or products that have been extracted, harvested or recovered, as well as manufactured, within 500 miles of the project site for a minimum of 10% (based on cost of the total materials value).	1 POINT
5.2 REGIONAL MATERIALS, 20% MANUFACTURED REGIONALLY	Building materials or products that have been extracted, harvested or recovered, as well as manufactured, within 500 miles of the project site for an additional 10% beyond MR credit 5.1 (total of 20% based on cost) of the total materials.	1 POINT IN ADDITION TO MR CREDIT 5.1

Source: LEED® — NC Green Building Rating System For New Construction & Major Renovations: Version 2.2. Every reasonable effort was made to present current and accurate information. Please consult the U.S. Green Building Council for further details on LEED® (www.usgbc.org).

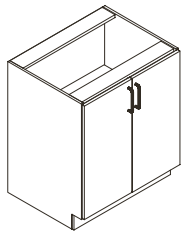
Base Cabinets

How to Specify Your Options



Base Cabinet Products

Doors and Adjustable Shelf

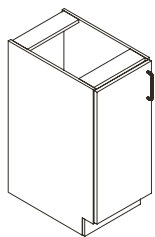


MCBA

MODEL #	WIDTH	DEPTH	HEIGHT	WEIGHT
MCBA242429	24	24	29	91
MCBA242433	24	24	33	99
MCBA242435	24	24	35	102
MCBA243029	24	30	29	104
MCBA243033	24	30	33	113
MCBA243035	24	30	35	117
MCBA302429	30	24	29	106
MCBA302433	30	24	33	115
MCBA302435	30	24	35	119
MCBA303029	30	30	29	121
MCBA303033	30	30	33	130
MCBA303035	30	30	35	134
MCBA362429	36	24	29	121
MCBA362433	36	24	33	130
MCBA362435	36	24	35	135
MCBA363029	36	30	29	137
MCBA363033	36	30	33	147
MCBA363035	36	30	35	152
MCBA422429	42	24	29	136
MCBA422433	42	24	33	146
MCBA422435	42	24	35	151
MCBA423029	42	30	29	153
MCBA423033	42	30	33	165
MCBA423035	42	30	35	170

Add "K" after Model # for lock option.

Left Door and Adjustable Shelf



MCBB

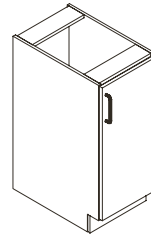
MODEL #	WIDTH	DEPTH	HEIGHT	WEIGHT
MCBB122429	12	24	29	62
MCBB122433	12	24	33	67
MCBB122435	12	24	35	70
MCBB123029	12	30	29	71
MCBB123033	12	30	33	78
MCBB123035	12	30	35	81
MCBB152429	15	24	29	69
MCBB152433	15	24	33	75
MCBB152435	15	24	35	78
MCBB153029	15	30	29	80
MCBB153033	15	30	33	87
MCBB153035	15	30	35	90
MCBB182429	18	24	29	77
MCBB182433	18	24	33	83
MCBB182435	18	24	35	86
MCBB183029	18	30	29	88
MCBB183033	18	30	33	95
MCBB183035	18	30	35	99

Left Door and Adjustable Shelf (cont.)

MODEL #	WIDTH	DEPTH	HEIGHT	WEIGHT
MCBB212429	21	24	29	84
MCBB212433	21	24	33	91
MCBB212435	21	24	35	94
MCBB213029	21	30	29	96
MCBB213033	21	30	33	104
MCBB213035	21	30	35	108

Add "K" after Model # for lock option.

Right Door and Adjustable Shelf

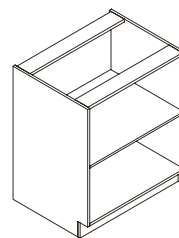


MCBC

MODEL #	WIDTH	DEPTH	HEIGHT	WEIGHT
MCBC122429	12	24	29	62
MCBC122433	12	24	33	67
MCBC122435	12	24	35	70
MCBC123029	12	30	29	71
MCBC123033	12	30	33	78
MCBC123035	12	30	35	81
MCBC152429	15	24	29	69
MCBC152433	15	24	33	75
MCBC152435	15	24	35	78
MCBC153029	15	30	29	80
MCBC153033	15	30	33	87
MCBC153035	15	30	35	90
MCBC182429	18	24	29	77
MCBC182433	18	24	33	83
MCBC182435	18	24	35	86
MCBC183029	18	30	29	88
MCBC183033	18	30	33	95
MCBC183035	18	30	35	99
MCBC212429	21	24	29	84
MCBC212433	21	24	33	91
MCBC212435	21	24	35	94
MCBC213029	21	30	29	96
MCBC213033	21	30	33	104
MCBC213035	21	30	35	108

Add "K" after Model # for lock option.

Open and Adjustable Shelf

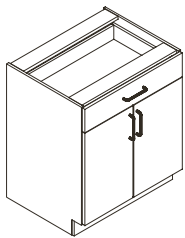


MCBD

MODEL #	WIDTH	DEPTH	HEIGHT	WEIGHT
MCBD122429	12	24	29	56
MCBD122433	12	24	33	61
MCBD122435	12	24	35	63
MCBD123029	12	30	29	66
MCBD123033	12	30	33	71
MCBD123035	12	30	35	74
MCBD152429	15	24	29	62
MCBD152433	15	24	33	67
MCBD152435	15	24	35	69
MCBD153029	15	30	29	72

Open and Adjustable Shelf (cont.)

MODEL #	WIDTH	DEPTH	HEIGHT	WEIGHT
MCBD153033	15	30	33	78
MCBD153035	15	30	35	81
MCBD182429	18	24	29	68
MCBD182433	18	24	33	73
MCBD182435	18	24	35	75
MCBD183029	18	30	29	79
MCBD183033	18	30	33	85
MCBD183035	18	30	35	88
MCBD242429	24	24	29	80
MCBD242433	24	24	33	85
MCBD242435	24	24	35	88
MCBD243029	24	30	29	93
MCBD243033	24	30	33	99
MCBD243035	24	30	35	102
MCBD302429	30	24	29	92
MCBD302433	30	24	33	98
MCBD302435	30	24	35	101
MCBD303029	30	30	29	106
MCBD303033	30	30	33	113
MCBD303035	30	30	35	116
MCBD362429	36	24	29	104
MCBD362433	36	24	33	110
MCBD362435	36	24	35	113
MCBD363029	36	30	29	120
MCBD363033	36	30	33	127
MCBD363035	36	30	35	131
MCBD422429	42	24	29	115
MCBD422433	42	24	33	122
MCBD422435	42	24	35	126
MCBD423029	42	30	29	133
MCBD423033	42	30	33	141
MCBD423035	42	30	35	145

Drawer, Doors and Adjustable Shelf

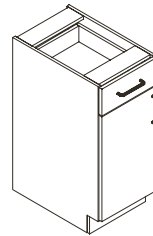
MCBE

MODEL #	WIDTH	DEPTH	HEIGHT	WEIGHT
MCBE242429	24	24	29	100
MCBE242433	24	24	33	107
MCBE242435	24	24	35	111
MCBE243029	24	30	29	113
MCBE243033	24	30	33	121
MCBE243035	24	30	35	125
MCBE302429	30	24	29	116
MCBE302433	30	24	33	125
MCBE302435	30	24	35	129
MCBE303029	30	30	29	131
MCBE303033	30	30	33	140
MCBE303035	30	30	35	144
MCBE362429	36	24	29	132
MCBE362433	36	24	33	142

Drawer, Doors and Adjustable Shelf (cont.)

MODEL #	WIDTH	DEPTH	HEIGHT	WEIGHT
MCBE362435	36	24	35	146
MCBE363029	36	30	29	148
MCBE363033	36	30	33	159
MCBE363035	36	30	35	164
MCBE422429	42	24	29	149
MCBE422433	42	24	33	159
MCBE422435	42	24	35	164
MCBE423029	42	30	29	166
MCBE423033	42	30	33	177
MCBE423035	42	30	35	183

Add "K" after Model # for lock option.

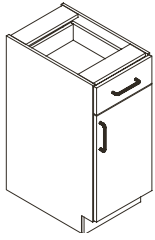
Drawer, Left Door and Adjustable Shelf

MCBF

MODEL #	WIDTH	DEPTH	HEIGHT	WEIGHT
MCBF122429	12	24	29	68
MCBF122433	12	24	33	73
MCBF122435	12	24	35	76
MCBF123029	12	30	29	77
MCBF123033	12	30	33	84
MCBF123035	12	30	35	87
MCBF152429	15	24	29	76
MCBF152433	15	24	33	82
MCBF152435	15	24	35	85
MCBF153029	15	30	29	86
MCBF153033	15	30	33	93
MCBF153035	15	30	35	97
MCBF182429	18	24	29	84
MCBF182433	18	24	33	90
MCBF182435	18	24	35	94
MCBF183029	18	30	29	95
MCBF183033	18	30	33	103
MCBF183035	18	30	35	106
MCBF212429	21	24	29	92
MCBF212433	21	24	33	99
MCBF212435	21	24	35	102
MCBF213029	21	30	29	104
MCBF213033	21	30	33	112
MCBF213035	21	30	35	116

Add "K" after Model # for lock option.

Drawer, Right Door and Adjustable Shelf



MCBG

MODEL #	WIDTH	DEPTH	HEIGHT	WEIGHT
MCBG122429	12	24	29	68
MCBG122433	12	24	33	73
MCBG122435	12	24	35	76
MCBG123029	12	30	29	77
MCBG123033	12	30	33	84
MCBG123035	12	30	35	87
MCBG152429	15	24	29	76
MCBG152433	15	24	33	82
MCBG152435	15	24	35	85
MCBG153029	15	30	29	86
MCBG153033	15	30	33	93
MCBG153035	15	30	35	97
MCBG182429	18	24	29	84
MCBG182433	18	24	33	90
MCBG182435	18	24	35	94
MCBG183029	18	30	29	95
MCBG183033	18	30	33	103
MCBG183035	18	30	35	106
MCBG212429	21	24	29	92
MCBG212433	21	24	33	99
MCBG212435	21	24	35	102
MCBG213029	21	30	29	104
MCBG213033	21	30	33	112
MCBG213035	21	30	35	116

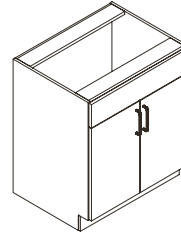
Add "K" after Model # for lock option.

2 Drawers, Doors and Adjustable Shelf (cont.)

MODEL #	WIDTH	DEPTH	HEIGHT	WEIGHT
MCBH422435	42	24	35	164
MCBH423029	42	30	29	166
MCBH423033	42	30	33	177
MCBH423035	42	30	35	183

Add "K" after Model # for lock option.

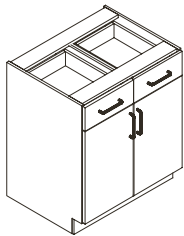
Sink



MCBI

MODEL #	WIDTH	DEPTH	HEIGHT	WEIGHT
MCBI242429	24	24	29	79
MCBI242433	24	24	33	86
MCBI242435	24	24	35	90
MCBI243029	24	30	29	88
MCBI243033	24	30	33	97
MCBI243035	24	30	35	101
MCBI302429	30	24	29	90
MCBI302433	30	24	33	99
MCBI302435	30	24	35	103
MCBI303029	30	30	29	100
MCBI303033	30	30	33	110
MCBI303035	30	30	35	114
MCBI362429	36	24	29	102
MCBI362433	36	24	33	111
MCBI362435	36	24	35	116
MCBI363029	36	30	29	113
MCBI363033	36	30	33	123
MCBI363035	36	30	35	128
MCBI422429	42	24	29	113
MCBI422433	42	24	33	123
MCBI422435	42	24	35	128
MCBI423029	42	30	29	125
MCBI423033	42	30	33	136
MCBI423035	42	30	35	141

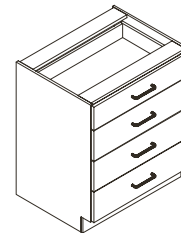
2 Drawers, Doors and Adjustable Shelf



MCBH

MODEL #	WIDTH	DEPTH	HEIGHT	WEIGHT
MCBH242429	24	24	29	100
MCBH242433	24	24	33	107
MCBH242435	24	24	35	111
MCBH243029	24	30	29	113
MCBH243033	24	30	33	121
MCBH243035	24	30	35	125
MCBH302429	30	24	29	116
MCBH302433	30	24	33	125
MCBH302435	30	24	35	129
MCBH303029	30	30	29	131
MCBH303033	30	30	33	140
MCBH303035	30	30	35	144
MCBH362429	36	24	29	132
MCBH362433	36	24	33	142
MCBH362435	36	24	35	146
MCBH363029	36	30	29	148
MCBH363033	36	30	33	159
MCBH363035	36	30	35	164
MCBH422429	42	24	29	149
MCBH422433	42	24	33	159

Four Drawers



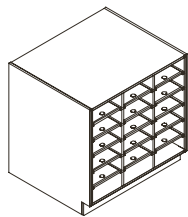
MCBJ

MODEL #	WIDTH	DEPTH	HEIGHT	WEIGHT
MCBJ152429	15	24	29	88
MCBJ152433	15	24	33	94
MCBJ152435	15	24	35	97
MCBJ153029	15	30	29	96
MCBJ153033	15	30	33	103
MCBJ153035	15	30	35	107
MCBJ182429	18	24	29	97
MCBJ182433	18	24	33	103
MCBJ182435	18	24	35	106
MCBJ183029	18	30	29	105
MCBJ183033	18	30	33	113
MCBJ183035	18	30	35	116
MCBJ212429	21	24	29	105

Four Drawers (cont.)

MODEL #	WIDTH	DEPTH	HEIGHT	WEIGHT
MCBJ212433	21	24	33	112
MCBJ212435	21	24	35	115
MCBJ213029	21	30	29	114
MCBJ213033	21	30	33	122
MCBJ213035	21	30	35	126
MCBJ242429	24	24	29	113
MCBJ242433	24	24	33	121
MCBJ242435	24	24	35	124
MCBJ243029	24	30	29	123
MCBJ243033	24	30	33	131
MCBJ243035	24	30	35	135
MCBJ302429	30	24	29	130
MCBJ302433	30	24	33	139
MCBJ302435	30	24	35	143
MCBJ303029	30	30	29	140
MCBJ303033	30	30	33	150
MCBJ303035	30	30	35	154
MCBJ362429	36	24	29	147
MCBJ362433	36	24	33	156
MCBJ362435	36	24	35	161
MCBJ363029	36	30	29	158
MCBJ363033	36	30	33	168
MCBJ363035	36	30	35	173
MCBJ422429	42	24	29	164
MCBJ422433	42	24	33	174
MCBJ422435	42	24	35	179
MCBJ423029	42	30	29	176
MCBJ423033	42	30	33	187
MCBJ423035	42	30	35	192

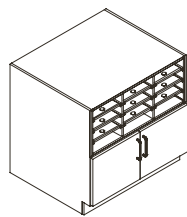
Add "K" after Model # for lock option.

Sorter with 15 Shelves*

MCBK

MODEL #	WIDTH	DEPTH	HEIGHT	WEIGHT
MCBK362429	36	24	29	108
MCBK362433	36	24	33	117
MCBK362435	36	24	35	122
MCBK363029	36	30	29	123
MCBK363033	36	30	33	134
MCBK363035	36	30	35	139
MCBK422429	42	24	29	117
MCBK422433	42	24	33	126
MCBK422435	42	24	35	131
MCBK423029	42	30	29	132
MCBK423033	42	30	33	143
MCBK423035	42	30	35	149

Shaded selections have oversize shelves; unshaded feature legal size shelves.

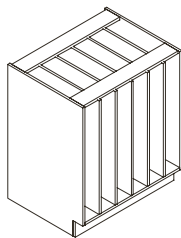
Sorter with Doors and 9 Shelves

MCBL

MODEL #	WIDTH	DEPTH	HEIGHT	WEIGHT
MCBL362429	36	24	29	125
MCBL362433	36	24	33	134
MCBL362435	36	24	35	139
MCBL363029	36	30	29	143
MCBL363033	36	30	33	154
MCBL363035	36	30	35	159
MCBL422429	42	24	29	139
MCBL422433	42	24	33	148
MCBL422435	42	24	35	153
MCBL423029	42	30	29	158
MCBL423033	42	30	33	169
MCBL423035	42	30	35	175

Shaded selections have oversize shelves; unshaded feature legal size shelves.

Add "K" after Model # for lock option.

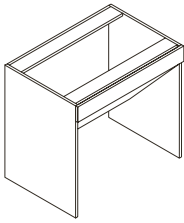
Vertical Slot

MCBM

MODEL #	WIDTH	DEPTH	HEIGHT	WEIGHT
MCBM242429	24	24	29	114
MCBM242433	24	24	33	127
MCBM242435	24	24	35	134
MCBM243029	24	30	29	135
MCBM243033	24	30	33	152
MCBM243035	24	30	35	160
MCBM302429	30	24	29	134
MCBM302433	30	24	33	150
MCBM302435	30	24	35	158
MCBM303029	30	30	29	159
MCBM303033	30	30	33	179
MCBM303035	30	30	35	188
MCBM362429	36	24	29	154
MCBM362433	36	24	33	173
MCBM362435	36	24	35	182
MCBM363029	36	30	29	183
MCBM363033	36	30	33	205
MCBM363035	36	30	35	216
MCBM422429	42	24	29	174
MCBM422433	42	24	33	195
MCBM422435	42	24	35	206
MCBM423029	42	30	29	207
MCBM423033	42	30	33	232
MCBM423035	42	30	35	245

Dividers are fixed with approximate 3" openings. Number of fixed dividers is determined by 3" openings.

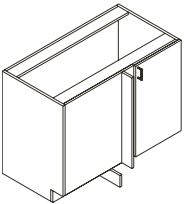
ADA Sink



MODEL #	WIDTH	DEPTH	HEIGHT	WEIGHT
MCBN332433	33	24	33	86
MCBN362433	36	24	33	90
MCBN422433	42	24	33	99

MCBN

Corner with Doors

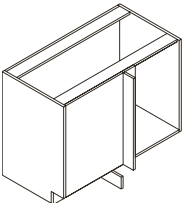


See page 22 for ordering instructions.

MODEL #	WIDTH	DEPTH	HEIGHT	WEIGHT
MCBO462429	46	24	29	115
MCBO462433	46	24	33	125
MCBO462435	46	24	35	130
MCBO523029	52	30	29	137
MCBO523033	52	30	33	148
MCBO523035	52	30	35	154

MCBO

Corner Open



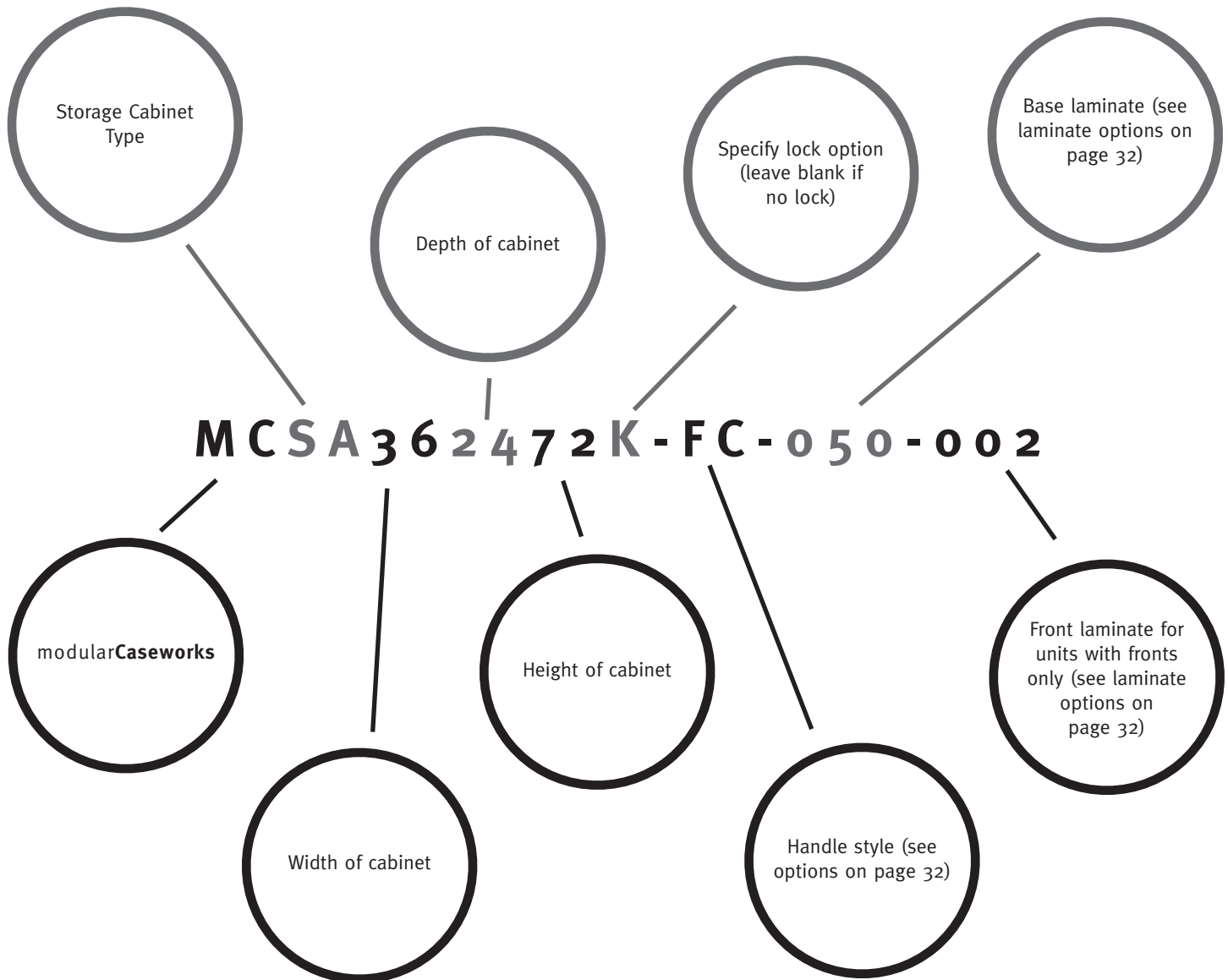
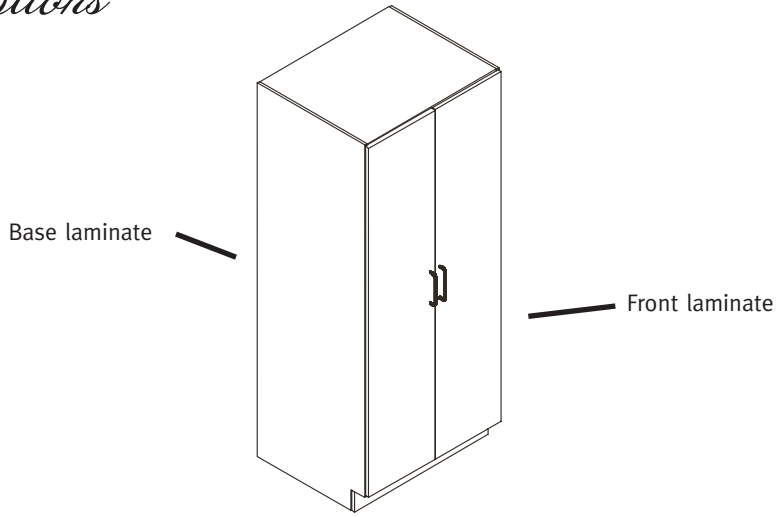
See page 22 for ordering instructions.

MODEL #	WIDTH	DEPTH	HEIGHT	WEIGHT
MCBP462429	46	24	29	106
MCBP462433	46	24	33	114
MCBP462435	46	24	35	119
MCBP523029	52	30	29	128
MCBP523033	52	30	33	138
MCBP523035	52	30	35	143

MCBP

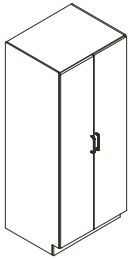
Storage Cabinets

How to Specify Your Options



Storage Cabinet Products

With Doors, Fixed and Adjustable Shelves*



MCSA

MODEL #	WIDTH	DEPTH	HEIGHT	WEIGHT
MCSA241860	24	18	60	149
MCSA241866	24	18	66	159
MCSA241872	24	18	72	178
MCSA241884	24	18	84	197
MCSA242460	24	24	60	179
MCSA242466	24	24	66	190
MCSA242472	24	24	72	213
MCSA242484	24	24	84	235
MCSA243060	24	30	60	208
MCSA243066	24	30	66	221
MCSA243072	24	30	72	249
MCSA243084	24	30	84	274
MCSA301860	30	18	60	175
MCSA301866	30	18	66	186
MCSA301872	30	18	72	209
MCSA301884	30	18	84	231
MCSA302460	30	24	60	209
MCSA302466	30	24	66	221
MCSA302472	30	24	72	250
MCSA302484	30	24	84	274
MCSA303060	30	30	60	243
MCSA303066	30	30	66	256
MCSA303072	30	30	72	290
MCSA303084	30	30	84	318
MCSA361860	36	18	60	201
MCSA361866	36	18	66	214
MCSA361872	36	18	72	240
MCSA361884	36	18	84	265
MCSA362460	36	24	60	239
MCSA362466	36	24	66	253
MCSA362472	36	24	72	286
MCSA362484	36	24	84	314
MCSA363060	36	30	60	277
MCSA363066	36	30	66	292
MCSA363072	36	30	72	332
MCSA363084	36	30	84	362

*Shaded selections have 1 fixed and 3 adjustable shelves; unshaded selections have 1 fixed and 2 adjustable shelves.

Add "K" after Model # for lock option.



MCSB



MCSC



MCSD

Door Left and Adjustable Shelves*

MODEL #	WIDTH	DEPTH	HEIGHT	WEIGHT
MCSB181860	18	18	60	123
MCSB181866	18	18	66	132
MCSB181872	18	18	72	146
MCSB181884	18	18	84	163
MCSB182460	18	24	60	149
MCSB182466	18	24	66	158
MCSB182472	18	24	72	177
MCSB182484	18	24	84	196
MCSB183060	18	30	60	174
MCSB183066	18	30	66	185
MCSB183072	18	30	72	208
MCSB183084	18	30	84	230

*Shaded selections have 4 adjustable shelves; unshaded selections have 3 adjustable shelves.

Add "K" after Model # for lock option.

Door Right and Adjustable Shelves*

MODEL #	WIDTH	DEPTH	HEIGHT	WEIGHT
MCSC181860	18	18	60	123
MCSC181866	18	18	66	132
MCSC181872	18	18	72	146
MCSC181884	18	18	84	163
MCSC182460	18	24	60	149
MCSC182466	18	24	66	158
MCSC182472	18	24	72	177
MCSC182484	18	24	84	196
MCSC183060	18	30	60	174
MCSC183066	18	30	66	185
MCSC183072	18	30	72	208
MCSC183084	18	30	84	230

*Shaded selections have 4 adjustable shelves; unshaded selections have 3 adjustable shelves.

Add "K" after Model # for lock option.

Open with Adjustable Shelves*

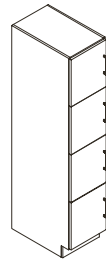
MODEL #	WIDTH	DEPTH	HEIGHT	WEIGHT
MCSD181860	18	18	60	104
MCSD181866	18	18	66	110
MCSD181872	18	18	72	123
MCSD181884	18	18	84	135
MCSD182460	18	24	60	129
MCSD182466	18	24	66	137
MCSD182472	18	24	72	153
MCSD182484	18	24	84	168
MCSD183060	18	30	60	154
MCSD183066	18	30	66	163

Open with Adjustable Shelves* (cont.)

MODEL #	WIDTH	DEPTH	HEIGHT	WEIGHT
MCS D183072	18	30	72	184
MCS D183084	18	30	84	202
MCS D241860	24	18	60	123
MCS D241866	24	18	66	130
MCS D241872	24	18	72	146
MCS D241884	24	18	84	160
MCS D242460	24	24	60	153
MCS D242466	24	24	66	161
MCS D242472	24	24	72	182
MCS D242484	24	24	84	198
MCS D243060	24	30	60	182
MCS D243066	24	30	66	192
MCS D243072	24	30	72	217
MCS D243084	24	30	84	237
MCS D301860	30	18	60	143
MCS D301866	30	18	66	150
MCS D301872	30	18	72	169
MCS D301884	30	18	84	184
MCS D302460	30	24	60	176
MCS D302466	30	24	66	185
MCS D302472	30	24	72	210
MCS D302484	30	24	84	228
MCS D303060	30	30	60	210
MCS D303066	30	30	66	220
MCS D303072	30	30	72	251
MCS D303084	30	30	84	271
MCS D361860	36	18	60	162
MCS D361866	36	18	66	170
MCS D361872	36	18	72	192
MCS D361884	36	18	84	209
MCS D362460	36	24	60	200
MCS D362466	36	24	66	210
MCS D362472	36	24	72	238
MCS D362484	36	24	84	256
MCS D363060	36	30	60	238
MCS D363066	36	30	66	249
MCS D363072	36	30	72	284
MCS D363084	36	30	84	306

*Shaded selections have 4 adjustable shelves; unshaded selections have 3 adjustable shelves.

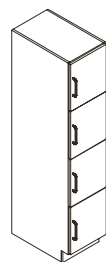
Locker with 4 Locking Left Doors



MCSE

MODEL #	WIDTH	DEPTH	HEIGHT	WEIGHT
MCSE121860K	12	18	60	97
MCSE121866K	12	18	66	104
MCSE121872K	12	18	72	111
MCSE121884K	12	18	84	125
MCSE122460K	12	24	60	119
MCSE122466K	12	24	66	127
MCSE122472K	12	24	72	135
MCSE122484K	12	24	84	151
MCSE123060K	12	30	60	140
MCSE123066K	12	30	66	149
MCSE123072K	12	30	72	159
MCSE123084K	12	30	84	179
MCSE151860K	15	18	60	110
MCSE151866K	15	18	66	118
MCSE151872K	15	18	72	125
MCSE151884K	15	18	84	140
MCSE152460K	15	24	60	134
MCSE152466K	15	24	66	142
MCSE152472K	15	24	72	151
MCSE152484K	15	24	84	169
MCSE153060K	15	30	60	157
MCSE153066K	15	30	66	167
MCSE153072K	15	30	72	178
MCSE153084K	15	30	84	198
MCSE181860K	18	18	60	123
MCSE181866K	18	18	66	132
MCSE181872K	18	18	72	140
MCSE181884K	18	18	84	156
MCSE182460K	18	24	60	149
MCSE182466K	18	24	66	158
MCSE182472K	18	24	72	168
MCSE182484K	18	24	84	187
MCSE183060K	18	30	60	174
MCSE183066K	18	30	66	185
MCSE183072K	18	30	72	196
MCSE183084K	18	30	84	218

Locker with 4 Locking Right Doors

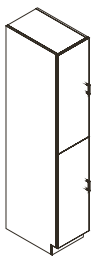


MCSF

MODEL #	WIDTH	DEPTH	HEIGHT	WEIGHT
MCSF121860K	12	18	60	97
MCSF121866K	12	18	66	104
MCSF121872K	12	18	72	111
MCSF121884K	12	18	84	125
MCSF122460K	12	24	60	119
MCSF122466K	12	24	66	127
MCSF122472K	12	24	72	135
MCSF122484K	12	24	84	151
MCSF123060K	12	30	60	140

Locker with 4 Locking Right Doors (cont.)

MODEL #	WIDTH	DEPTH	HEIGHT	WEIGHT
MCSF123066K	12	30	66	149
MCSF123072K	12	30	72	159
MCSF123084K	12	30	84	179
MCSF151860K	15	18	60	110
MCSF151866K	15	18	66	118
MCSF151872K	15	18	72	125
MCSF151884K	15	18	84	140
MCSF152460K	15	24	60	134
MCSF152466K	15	24	66	142
MCSF152472K	15	24	72	151
MCSF152484K	15	24	84	169
MCSF153060K	15	30	60	157
MCSF153066K	15	30	66	167
MCSF153072K	15	30	72	178
MCSF153084K	15	30	84	198
MCSF181860K	18	18	60	123
MCSF181866K	18	18	66	132
MCSF181872K	18	18	72	140
MCSF181884K	18	18	84	156
MCSF182460K	18	24	60	149
MCSF182466K	18	24	66	158
MCSF182472K	18	24	72	168
MCSF182484K	18	24	84	187
MCSF183060K	18	30	60	174
MCSF183066K	18	30	66	185
MCSF183072K	18	30	72	196
MCSF183084K	18	30	84	218

Locker with 2 Locking Left Doors

MCSI

MODEL #	WIDTH	DEPTH	HEIGHT	WEIGHT
MCSI121860K	12	18	60	97
MCSI121866K	12	18	66	104
MCSI121872K	12	18	72	111
MCSI121884K	12	18	84	125
MCSI122460K	12	24	60	119
MCSI122466K	12	24	66	127
MCSI122472K	12	24	72	135
MCSI122484K	12	24	84	151
MCSI123060K	12	30	60	140
MCSI123066K	12	30	66	149
MCSI123072K	12	30	72	159
MCSI123084K	12	30	84	179
MCSI151860K	15	18	60	110
MCSI151866K	15	18	66	118
MCSI151872K	15	18	72	125
MCSI151884K	15	18	84	140
MCSI152460K	15	24	60	134
MCSI152466K	15	24	66	142

Locker with 2 Locking Left Doors (cont.)

MODEL #	WIDTH	DEPTH	HEIGHT	WEIGHT
MCSI152472K	15	24	72	151
MCSI152484K	15	24	84	169
MCSI153060K	15	30	60	157
MCSI153066K	15	30	66	167
MCSI153072K	15	30	72	178
MCSI153084K	15	30	84	198
MCSI181860K	18	18	60	123
MCSI181866K	18	18	66	132
MCSI181872K	18	18	72	140
MCSI181884K	18	18	84	156
MCSI182460K	18	24	60	149
MCSI182466K	18	24	66	158
MCSI182472K	18	24	72	168
MCSI182484K	18	24	84	187
MCSI183060K	18	30	60	174
MCSI183066K	18	30	66	185
MCSI183072K	18	30	72	196
MCSI183084K	18	30	84	218

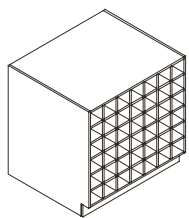
Locker with 2 Locking Right Doors

MCSJ

MODEL #	WIDTH	DEPTH	HEIGHT	WEIGHT
MCSJ121860K	12	18	60	97
MCSJ121866K	12	18	66	104
MCSJ121872K	12	18	72	111
MCSJ121884K	12	18	84	125
MCSJ122460K	12	24	60	119
MCSJ122466K	12	24	66	127
MCSJ122472K	12	24	72	135
MCSJ122484K	12	24	84	151
MCSJ123060K	12	30	60	140
MCSJ123066K	12	30	66	149
MCSJ123072K	12	30	72	159
MCSJ123084K	12	30	84	179
MCSJ151860K	15	18	60	110
MCSJ151866K	15	18	66	118
MCSJ151872K	15	18	72	125
MCSJ151884K	15	18	84	140
MCSJ152460K	15	24	60	134
MCSJ152466K	15	24	66	142
MCSJ152472K	15	24	72	151
MCSJ152484K	15	24	84	169
MCSJ153060K	15	30	60	157
MCSJ153066K	15	30	66	167
MCSJ153072K	15	30	72	178
MCSJ153084K	15	30	84	198
MCSJ181860K	18	18	60	123
MCSJ181866K	18	18	66	132
MCSJ181872K	18	18	72	140

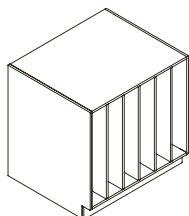
Locker with 2 Locking Right Doors (cont.)

MODEL #	WIDTH	DEPTH	HEIGHT	WEIGHT
MCSJ181884K	18	18	84	156
MCSJ182460K	18	24	60	149
MCSJ182466K	18	24	66	158
MCSJ182472K	18	24	72	168
MCSJ182484K	18	24	84	187
MCSJ183060K	18	30	60	174
MCSJ183066K	18	30	66	185
MCSJ183072K	18	30	72	196
MCSJ183084K	18	30	84	218

Rolled Plan with 30 Fixed Openings

MODEL #	WIDTH	DEPTH	HEIGHT	WEIGHT
MCSG363035	36	30	35	236
MCSG363635	36	36	35	277

MCSG

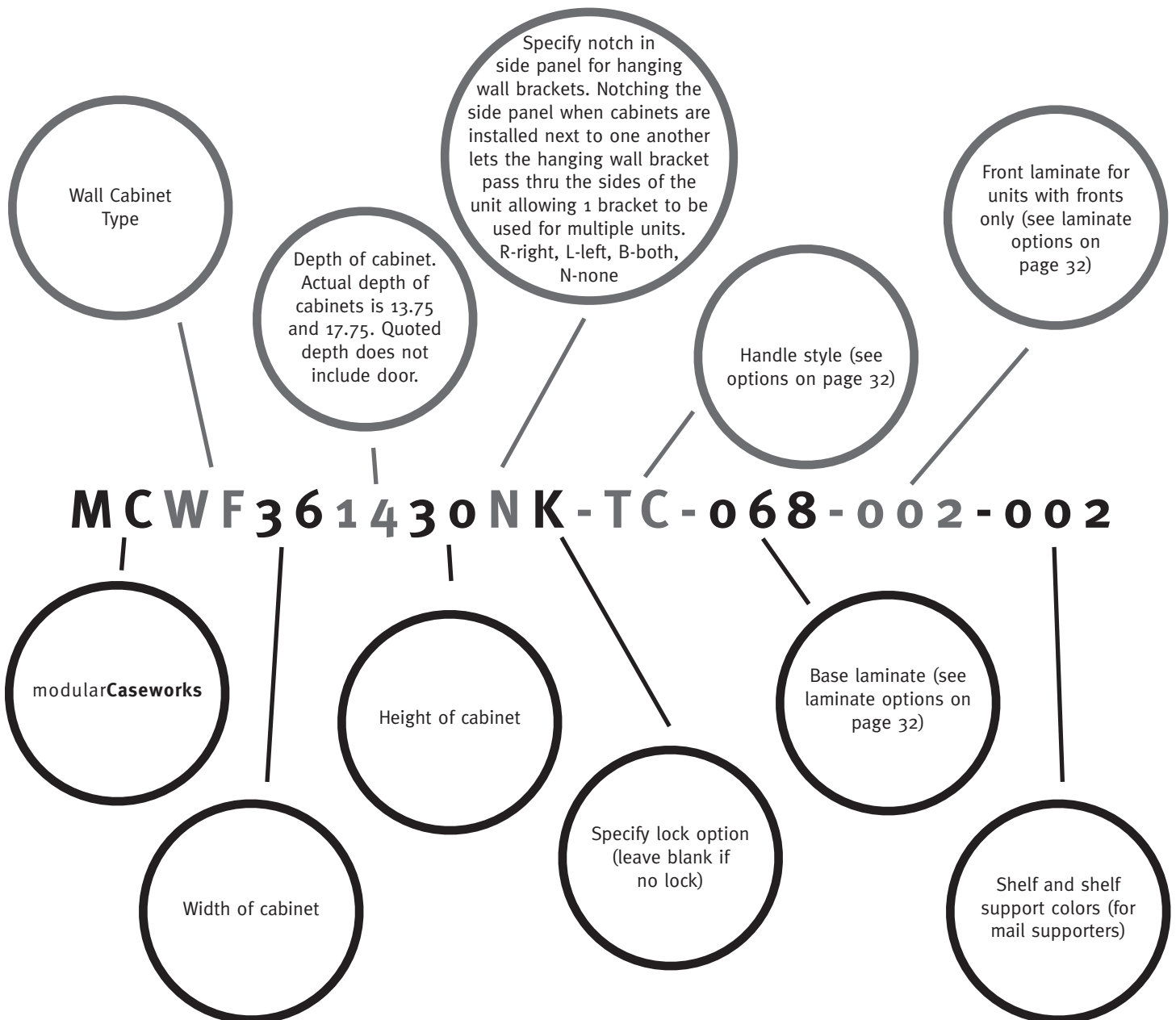
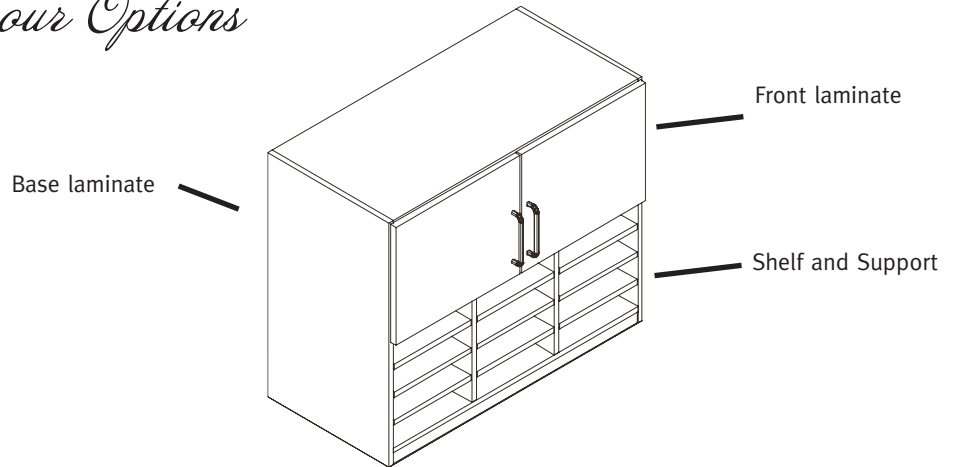
Vertical with 6 Fixed Openings

MODEL #	WIDTH	DEPTH	HEIGHT	WEIGHT
MCSH363035	36	30	35	200
MCSH363635	36	36	35	233

MCSH

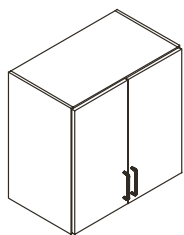
Wall Cabinets

How to Specify Your Options



Wall Cabinet Products

Doors and Adjustable Shelf

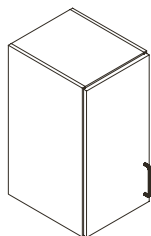


MCWA

MODEL #	WIDTH	DEPTH	HEIGHT	WEIGHT
MCWA241418?	24	14	18	52
MCWA241424?	24	14	24	61
MCWA241430?	24	14	30	70
MCWA241436?	24	14	36	78
MCWA241818?	24	18	18	61
MCWA241824?	24	18	24	70
MCWA241830?	24	18	30	80
MCWA241836?	24	18	36	90
MCWA301418?	30	14	18	61
MCWA301424?	30	14	24	71
MCWA301430?	30	14	30	81
MCWA301436?	30	14	36	92
MCWA301818?	30	18	18	72
MCWA301824?	30	18	24	83
MCWA301830?	30	18	30	93
MCWA301836?	30	18	36	104
MCWA361418?	36	14	18	71
MCWA361424?	36	14	24	82
MCWA361430?	36	14	30	93
MCWA361436?	36	14	36	105
MCWA361818?	36	18	18	82
MCWA361824?	36	18	24	95
MCWA361830?	36	18	30	107
MCWA361836?	36	18	36	119
MCWA421418?	42	14	18	80
MCWA421424?	42	14	24	92
MCWA421430?	42	14	30	105
MCWA421436?	42	14	36	118
MCWA421818?	42	18	18	93
MCWA421824?	42	18	24	107
MCWA421830?	42	18	30	120
MCWA421836?	42	18	36	134

For No notch option, add "N" after #. For Left notch option, add "L" after #, and for Right notch option, add "R". For Both sides notched, add "B" after #. Add "K" after Notch option for lock or leave blank for no lock.

Left Door and Adjustable Shelf



MCWB

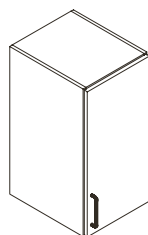
MODEL #	WIDTH	DEPTH	HEIGHT	WEIGHT
MCWB121418?	12	14	18	34
MCWB121424?	12	14	24	40
MCWB121430?	12	14	30	46
MCWB121436?	12	14	36	52
MCWB121818?	12	18	18	40
MCWB121824?	12	18	24	46

Left Door and Adjustable Shelf (cont.)

MODEL #	WIDTH	DEPTH	HEIGHT	WEIGHT
MCWB121830?	12	18	30	53
MCWB121836?	12	18	36	60
MCWB151418?	15	14	18	39
MCWB151424?	15	14	24	45
MCWB151430?	15	14	30	52
MCWB151436?	15	14	36	58
MCWB151818?	15	18	18	45
MCWB151824?	15	18	24	52
MCWB151830?	15	18	30	60
MCWB151836?	15	18	36	67
MCWB181418?	18	14	18	43
MCWB181424?	18	14	24	50
MCWB181430?	18	14	30	58
MCWB181436?	18	14	36	65
MCWB181818?	18	18	18	50
MCWB181824?	18	18	24	58
MCWB181830?	18	18	30	67
MCWB181836?	18	18	36	75

For No notch option, add "N" after #. For Left notch option, add "L" after #, and for Right notch option, add "R". For Both sides notched, add "B" after #. Add "K" after Notch option for lock or leave blank for no lock.

Right Door and Adjustable Shelf



MCWC

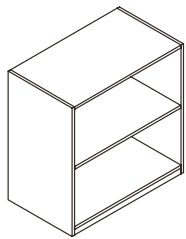
MODEL #	WIDTH	DEPTH	HEIGHT	WEIGHT
MCWC121418?	12	14	18	34
MCWC121424?	12	14	24	40
MCWC121430?	12	14	30	46
MCWC121436?	12	14	36	52
MCWC121818?	12	18	18	40
MCWC121824?	12	18	24	46
MCWC121830?	15	18	30	53
MCWC121836?	15	18	36	60
MCWC151418?	15	14	18	39
MCWC151424?	15	14	24	45
MCWC151430?	15	14	30	52
MCWC151436?	15	14	36	58
MCWC151818?	15	18	18	45
MCWC151824?	15	18	24	52
MCWC151830?	15	18	30	60
MCWC151836?	15	18	36	67
MCWC181418?	18	14	18	43
MCWC181424?	18	14	24	50
MCWC181430?	18	14	30	58
MCWC181436?	18	14	36	65
MCWC181818?	18	18	18	50
MCWC181824?	18	18	24	58

Right Door and Adjustable Shelf (cont.)

MODEL #	WIDTH	DEPTH	HEIGHT	WEIGHT
MCWC181830?	18	18	30	67
MCWC181836?	18	18	36	75

For No notch option, add "N" after #. For Left notch option, add "L" after #, and for Right notch option, add "R". For Both sides notched, add "B" after #. Add "K" after Notch option for lock or leave blank for no lock.

Open with Adjustable Shelf



MCWD

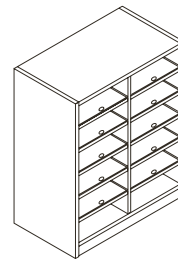
MODEL #	WIDTH	DEPTH	HEIGHT	WEIGHT
MCWD121418?	12	14	18	30
MCWD121424?	12	14	24	34
MCWD121430?	12	14	30	39
MCWD121436?	12	14	36	43
MCWD121818?	12	18	18	35
MCWD121824?	12	18	24	41
MCWD121830?	12	18	30	46
MCWD121836?	12	18	36	51
MCWD151418?	15	14	18	33
MCWD151424?	15	14	24	38
MCWD151430?	15	14	30	43
MCWD151436?	15	14	36	48
MCWD151818?	15	18	18	40
MCWD151824?	15	18	24	45
MCWD151830?	15	18	30	51
MCWD151836?	15	18	36	57
MCWD181418?	18	14	18	37
MCWD181424?	18	14	24	42
MCWD181430?	18	14	30	47
MCWD181436?	18	14	36	52
MCWD181818?	18	18	18	44
MCWD181824?	18	18	24	50
MCWD181830?	18	18	30	56
MCWD181836?	18	18	36	62
MCWD241418?	24	14	18	44
MCWD241424?	24	14	24	50
MCWD241430?	24	14	30	56
MCWD241436?	24	14	36	61
MCWD241818?	24	18	18	52
MCWD241824?	24	18	24	59
MCWD241830?	24	18	30	66
MCWD241836?	24	18	36	73
MCWD301418?	30	14	18	51
MCWD301424?	30	14	24	57
MCWD301430?	30	14	30	64
MCWD301436?	30	14	36	71
MCWD301818?	30	18	18	61
MCWD301824?	30	18	24	69
MCWD301830?	30	18	30	76
MCWD301836?	30	18	36	83

Open with Adjustable Shelf (cont.)

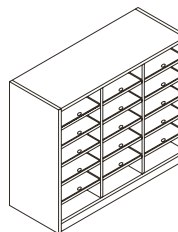
MODEL #	WIDTH	DEPTH	HEIGHT	WEIGHT
MCWD361418?	36	14	18	58
MCWD361424?	36	14	24	65
MCWD361430?	36	14	30	72
MCWD361436?	36	14	36	80
MCWD361818?	36	18	18	70
MCWD361824?	36	18	24	78
MCWD361830?	36	18	30	86
MCWD361836?	36	18	36	94
MCWD421418?	42	14	18	65
MCWD421424?	42	14	24	73
MCWD421430?	42	14	30	81
MCWD421436?	42	14	36	89
MCWD421818?	42	18	18	78
MCWD421824?	42	18	24	87
MCWD421830?	42	18	30	96
MCWD421836?	42	18	36	105

For No notch option, add "N" after #. For Left notch option, add "L" after #, and for Right notch option, add "R". For Both sides notched, add "B" after #.

Sorter with Shelves*



MCWE
2 Columns



MCWE
3 Columns

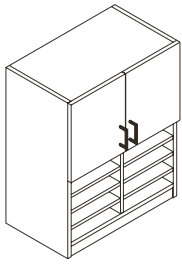
MODEL #	WIDTH	DEPTH	HEIGHT	WEIGHT
Standard Shelves				
MCWE241430?	24-1/4	14	30	60
MCWE241436?	24-1/4	14	36	67
MCWE361430?	36	14	30	80
MCWE361436?	36	14	36	90
Legal Shelves				
MCWE241830?	24-1/4	18	30	69
MCWE241836?	24-1/4	18	36	78
MCWE361830?	36	18	30	93
MCWE361836?	36	18	36	104

MODEL #	WIDTH	DEPTH	HEIGHT	WEIGHT
Oversized Shelves				
MCWE281830?	28-1/4	18	30	75
MCWE281836?	28-1/4	18	36	83
MCWE421830?	42	18	30	101
MCWE421836?	42	18	36	113

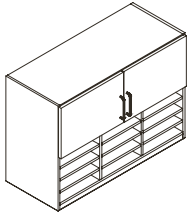
*Shaded selections have 15 shelves; unshaded selections hold 10 shelves.

For No notch option, add "N" after #. For Left notch option, add "L" after #, and for Right notch option, add "R". For Both sides notched, add "B" after #. See accessory page for additional shelves.

Sorter with Doors and Shelves*



MCWF
2 Columns



MCWF
3 Columns

MODEL #	WIDTH	DEPTH	HEIGHT	WEIGHT
Standard Shelves				
MCWF241430?	24-1/4	14	30	67
MCWF241436?	24-1/4	14	36	75
MCWF361430?	36	14	30	90
MCWF361436?	36	14	36	100

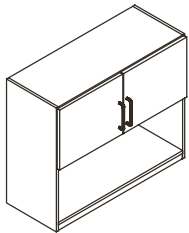
MODEL #	WIDTH	DEPTH	HEIGHT	WEIGHT
Legal Shelves				
MCWF241830?	24-1/4	18	30	78
MCWF241836?	24-1/4	18	36	87
MCWF361830?	36	18	30	104
MCWF361836?	36	18	36	116

MODEL #	WIDTH	DEPTH	HEIGHT	WEIGHT
Oversized Shelves				
MCWF281830?	28-1/4	18	30	85
MCWF281836?	28-1/4	18	36	95
MCWF421830?	42	18	30	115
MCWF421836?	42	18	36	128

*Shaded selections have 9 shelves on 3 columns; unshaded selections house 6 shelves on 2 columns.

For No notch option, add "N" after #. For Left notch option, add "L" after #, and for Right notch option, add "R". For Both sides notched, add "B" after #. See accessory page for additional shelves. Add "K" after Notch option for lock or leave blank for no lock.

Open with Doors

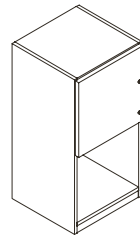


MCWG

MODEL #	WIDTH	DEPTH	HEIGHT	WEIGHT
MCWG241430?	24	14	30	63
MCWG241436?	24	14	36	70
MCWG241830?	24	18	30	73
MCWG241836?	24	18	36	81
MCWG301430?	30	14	30	73
MCWG301436?	30	14	36	81
MCWG301830?	30	18	30	85
MCWG301836?	30	18	36	94
MCWG361430?	36	14	30	83
MCWG361436?	36	14	36	92
MCWG361830?	36	18	30	96
MCWG361836?	36	18	36	107
MCWG421830?	42	18	30	108
MCWG421836?	42	18	36	119

For No notch option, add "N" after #. For Left notch option, add "L" after #, and for Right notch option, add "R". For Both sides notched, add "B" after #. Add "K" after Notch option for lock or leave blank for no lock.

Open with Left Door

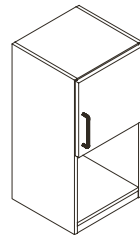


MCWH

MODEL #	WIDTH	DEPTH	HEIGHT	WEIGHT
MCWH121430?	12	14	30	42
MCWH121436?	12	14	36	47
MCWH121830?	12	18	30	50
MCWH121836?	12	18	36	56
MCWH151430?	15	14	30	47
MCWH151436?	15	14	36	53
MCWH151830?	15	18	30	55
MCWH151836?	15	18	36	62
MCWH181430?	18	14	30	52
MCWH181436?	18	14	36	59
MCWH181830?	18	18	30	61
MCWH181836?	18	18	36	68

For No notch option, add "N" after #. For Left notch option, add "L" after #, and for Right notch option, add "R". For Both sides notched, add "B" after #. Add "K" after Notch option for lock or leave blank for no lock.

Open with Right Door

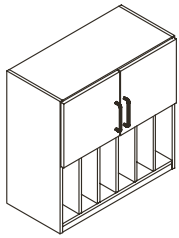


MCWI

MODEL #	WIDTH	DEPTH	HEIGHT	WEIGHT
MCWI121430?	12	14	30	42
MCWI121436?	12	14	36	47
MCWI121830?	12	18	30	50
MCWI121836?	12	18	36	56
MCWI151430?	15	14	30	47
MCWI151436?	15	14	36	53
MCWI151830?	15	18	30	55
MCWI151836?	15	18	36	62
MCWI181430?	18	14	30	52
MCWI181436?	18	14	36	59
MCWI181830?	18	18	30	61
MCWI181836?	18	18	36	68

For No notch option, add "N" after #. For Left notch option, add "L" after #, and for Right notch option, add "R". For Both sides notched, add "B" after #. Add "K" after Notch option for lock or leave blank for no lock.

Vertical Slots and Doors



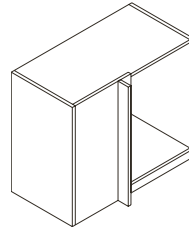
MCWJ

MODEL #	WIDTH	DEPTH	HEIGHT	WEIGHT
MCWJ241430?	24	14	30	73
MCWJ241436?	24	14	36	83
MCWJ241830?	24	18	30	87
MCWJ241836?	24	18	36	99
MCWJ301430?	30	14	30	86
MCWJ301436?	30	14	36	98
MCWJ301830?	30	18	30	102
MCWJ301836?	30	18	36	116
MCWJ361430?	36	14	30	99
MCWJ361436?	36	14	36	113
MCWJ361830?	36	18	30	117
MCWJ361836?	36	18	36	134
MCWJ421430?	42	14	30	111
MCWJ421436?	42	14	36	127
MCWJ421830?	42	18	30	132
MCWJ421836?	42	18	36	151

For No notch option, add "N" after #. For Left notch option, add "L" after #, and for Right notch option, add "R". For Both sides notched, add "B" after #. Add "K" after Notch option for lock or leave blank for no lock.

Dividers are fixed with approximately 3" w openings. Number of fixed dividers is determined by 3" openings.

Open Corner



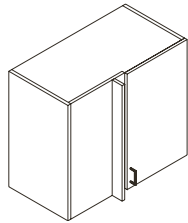
MCWN

See page 23 for ordering instructions.

MODEL #	WIDTH	DEPTH	HEIGHT	WEIGHT
MCWN351418	35	14	18	48
MCWN351424	35	14	24	55
MCWN351430	35	14	30	62
MCWN351436	35	14	36	70
MCWN391818	39	18	18	60
MCWN391824	39	18	24	69
MCWN391830	39	18	30	77
MCWN391836	39	18	36	86

For No notch option, add "N" after #. For Left notch option, add "L" after #, and for Right notch option, add "R". For Both sides notched, add "B" after #.

Corner with Doors



MCWM

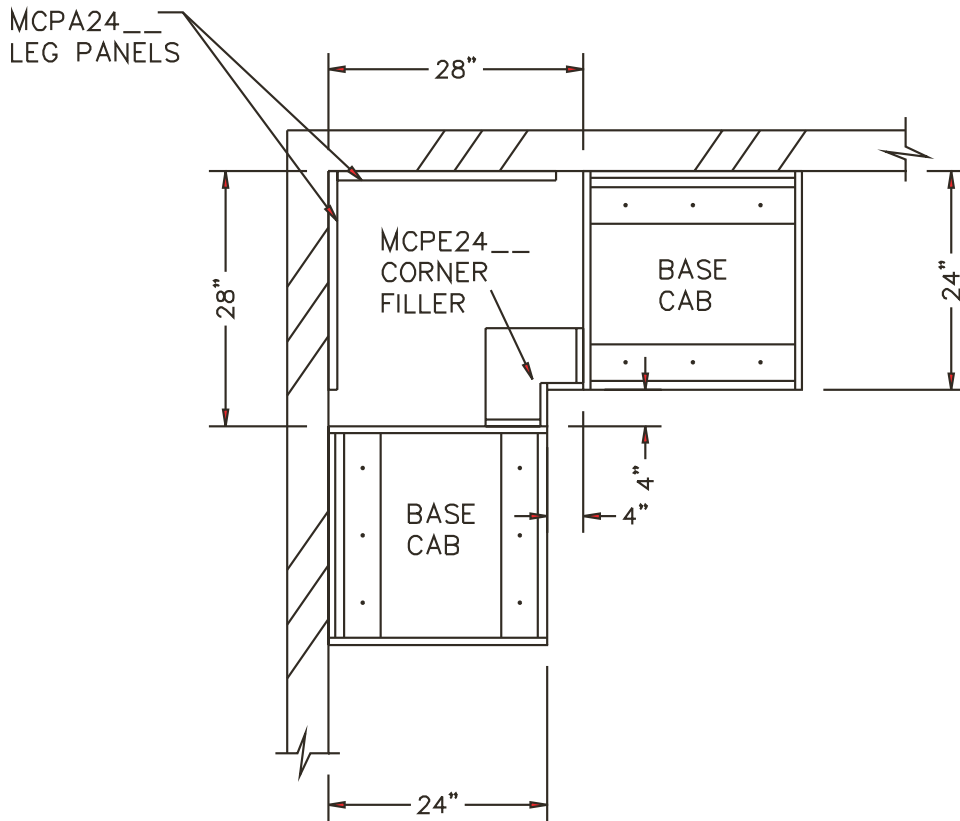
See page 23 for ordering instructions.

MODEL #	WIDTH	DEPTH	HEIGHT	WEIGHT
MCWM351418	35	14	18	54
MCWM351424	35	14	24	63
MCWM351430	35	14	30	73
MCWM351436	35	14	36	82
MCWM391818	39	18	18	66
MCWM391824	39	18	24	77
MCWM391830	39	18	30	88
MCWM391836	39	18	36	99

For No notch option, add "N" after #. For Left notch option, add "L" after #, and for Right notch option, add "R". For Both sides notched, add "B" after #. Add "K" after Notch option for lock or leave blank for no lock.

Corner Cabinets

How to Calculate Corners Using Base Cabinet Corner Fillers

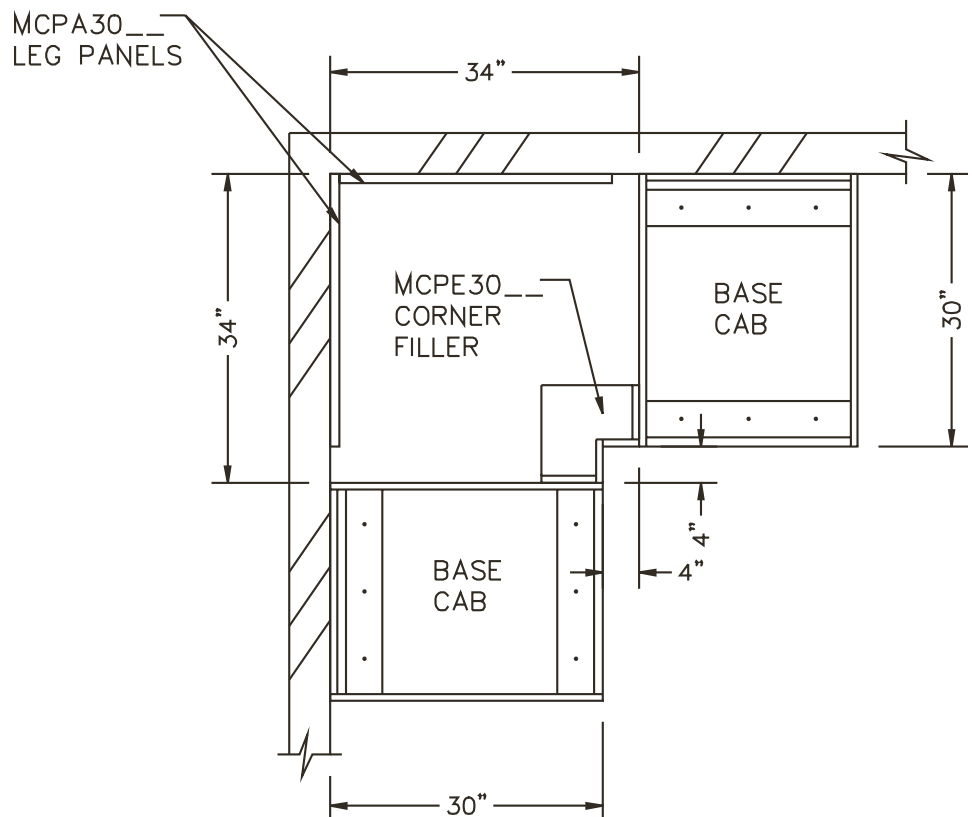


**BASE CABINET CORNER FILLER
– 24” DEEP BASE CABINETS**

To calculate the corner spacing for a 24” deep base cabinet subtract 28” from each corner wall. This allows you to use the base cabinet corner filler (MCPE24). The counter top that extends into the dead corner space must be supported in the corners with (2) leg panels (MCPA24). See page 29-30 to order.

**BASE CABINET CORNER FILLER
– 30” DEEP BASE CABINETS**

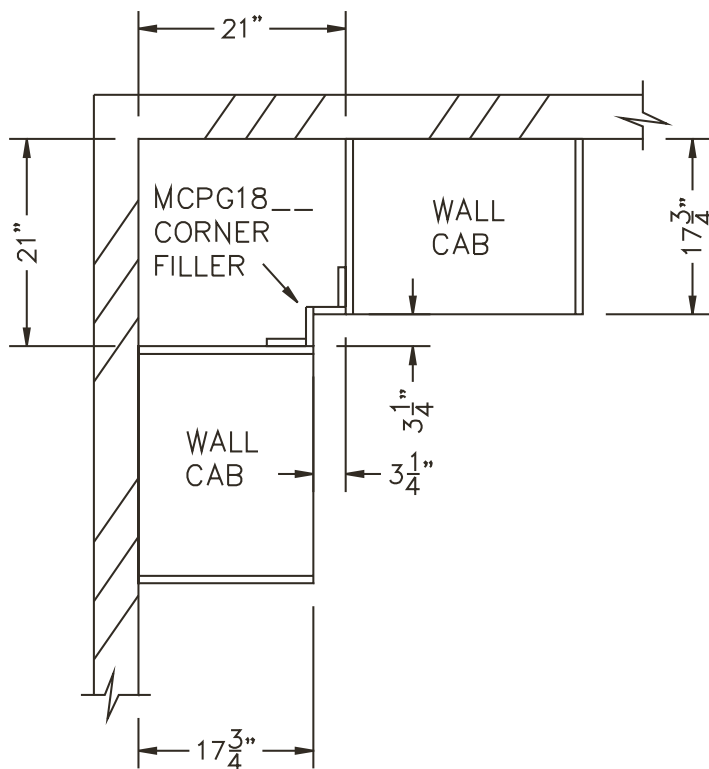
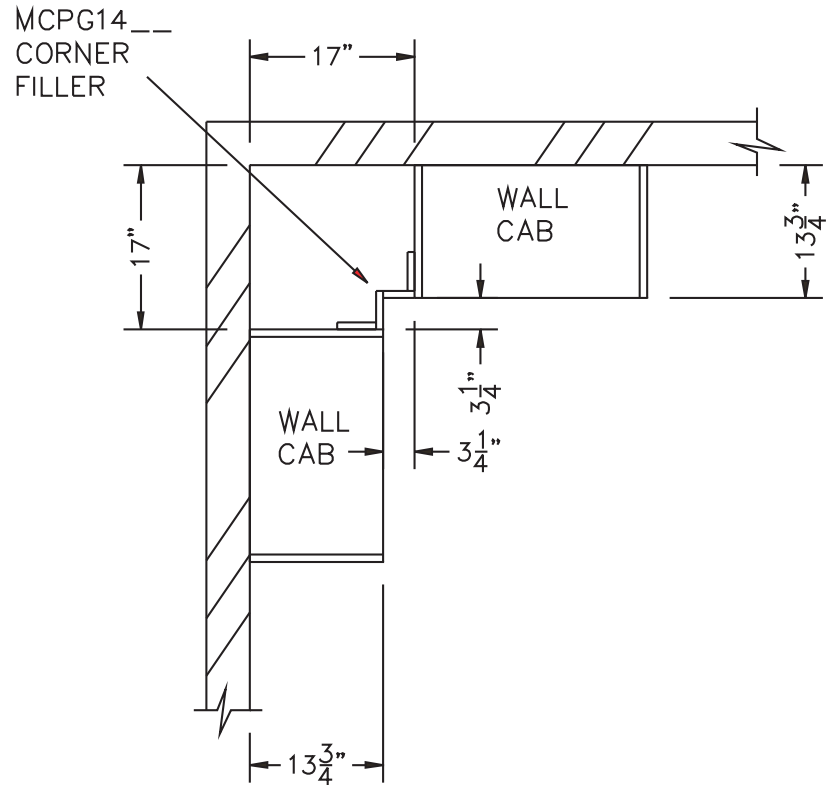
To calculate the corner spacing for a 30” deep base cabinet subtract 34” from each corner wall. This allows you to use the base cabinet corner filler (MCPE30). The counter top that extends into the dead corner space must be supported in the corners with (2) leg panels (MCPA30). See page 29-30 to order.



How to Calculate Corners Using Wall Cabinet Corner Fillers

WALL CABINET CORNER FILLER – 13 3/4" DEEP WALL CABINETS

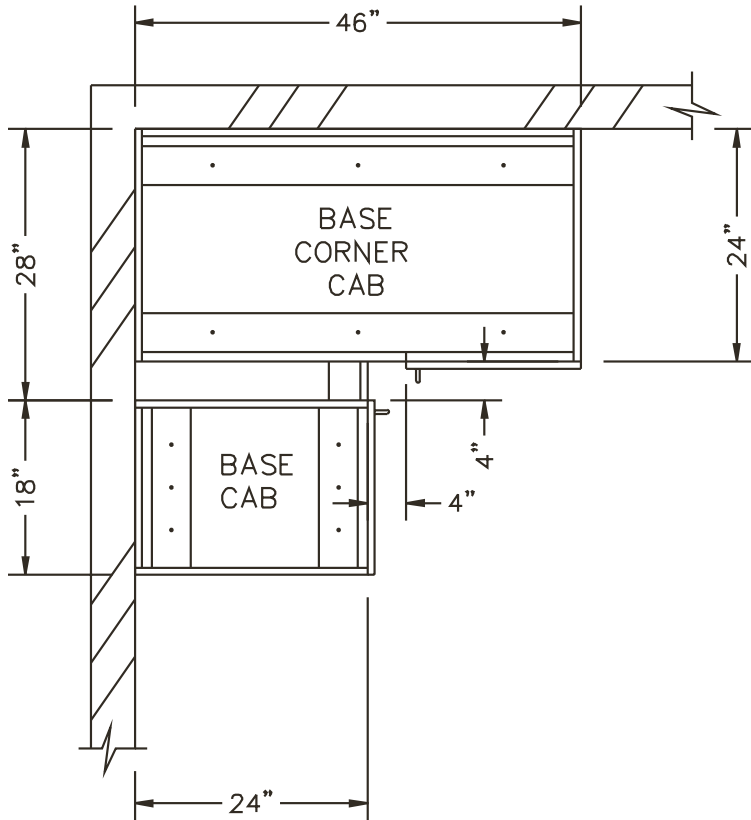
To calculate the corner spacing for a 13 3/4" deep wall cabinet subtract 17" from each corner wall. This allows you to use the wall cabinet corner filler (MCPG14___). See page 30 to order.



WALL CABINET CORNER FILLER – 17 3/4" DEEP WALL CABINETS

To calculate the corner spacing for a 17 3/4" deep wall cabinet subtract 21" from each corner wall. This allows you to use the wall cabinet corner filler (MCPG18___). See page 30 to order.

How to Calculate Corners Using Corner Base Cabinets

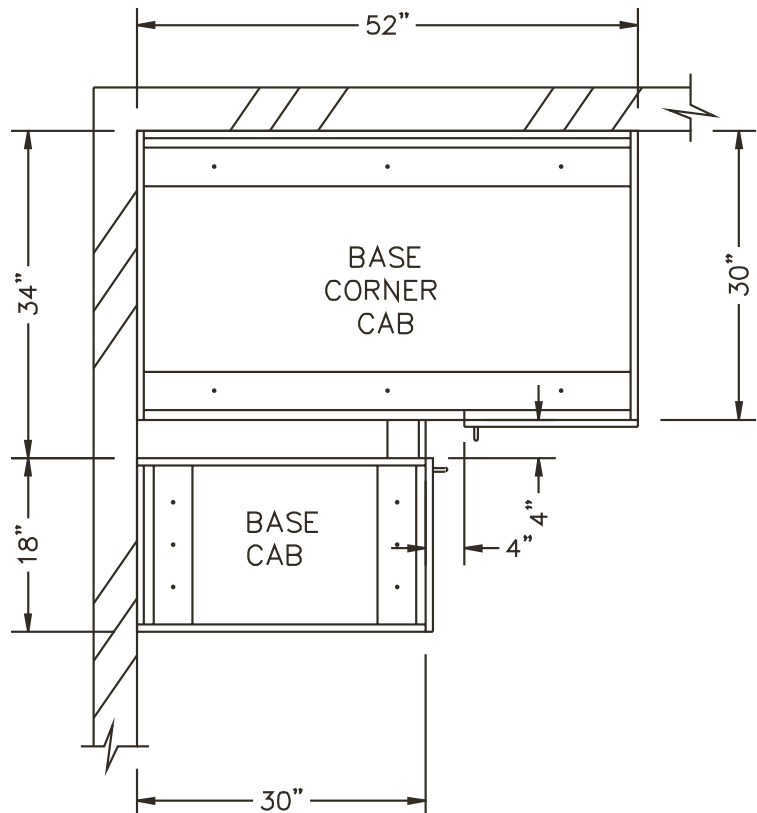


BASE CORNER CABINET – 24" DEEP BASE CABINETS

To calculate the corner spacing for a 24" deep base corner cabinet subtract 46" from each corner wall. This allows you to use the 46" wide base corner cabinet (MCBO4624__ or MCBP4624__) and an 18" wide base cabinet on the opposite wall (MCBB1824__ or MCBD1824__). See page 9 to order.

BASE CORNER CABINET – 30" DEEP BASE CABINETS

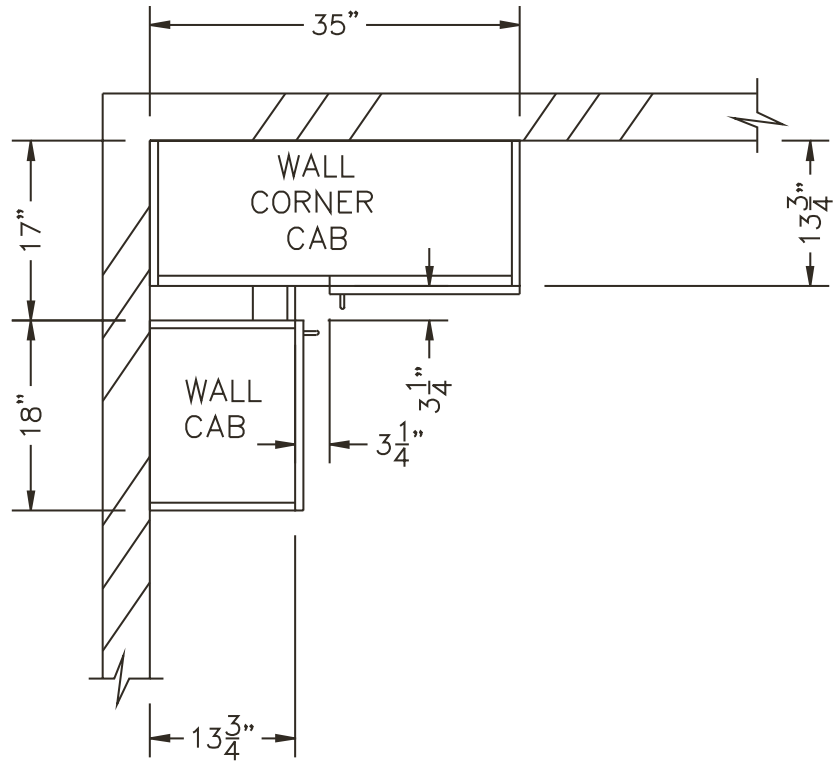
To calculate the corner spacing for a 30" deep base corner cabinet subtract 52" from each corner wall. This allows you to use the 52" wide base corner cabinet (MCBO5230__ or MCBP5230__) and an 18" wide base cabinet on the opposite wall (MCBB1830__ or MCBD1830__). See page 9 to order.



How to Calculate Corners Using Corner Wall Cabinets

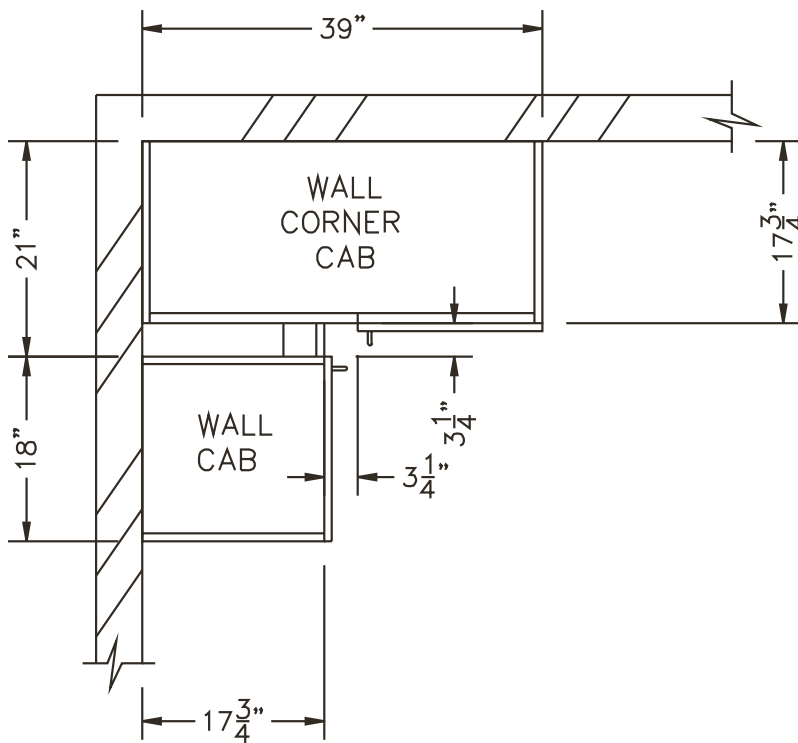
WALL CORNER CABINET – 13 3/4" DEEP WALL CABINETS

To calculate the corner spacing for a 13 3/4" deep wall corner cabinet subtract 35" from each corner wall. This allows you to use the 35" wide base corner cabinet (MCWM3514__ or MCWN3514__) and an 18" wide wall cabinet on the opposite wall (MCWB1814__ or MCWD1814__). See page 19 to order.



WALL CORNER CABINET – 17 3/4" DEEP WALL CABINETS

To calculate the corner spacing for a 17 3/4" deep wall corner cabinet subtract 39" from each corner wall. This allows you to use the 39" wide base corner cabinet (MCWM3918__ or MCWN3918__) and an 18" wide wall cabinet on the opposite wall (MCWB1818__ or MCWD1818__). See page 19 to order.



Work Surfaces

Construction

Work surfaces are constructed of 1 1/16" thick high-pressure laminate (HPL) with industrial grade 40-50 lb. sub-strate backed with a .027 phenolic backer. When available, work surfaces are edged with 2mm impact resistant PVC edgebanding.

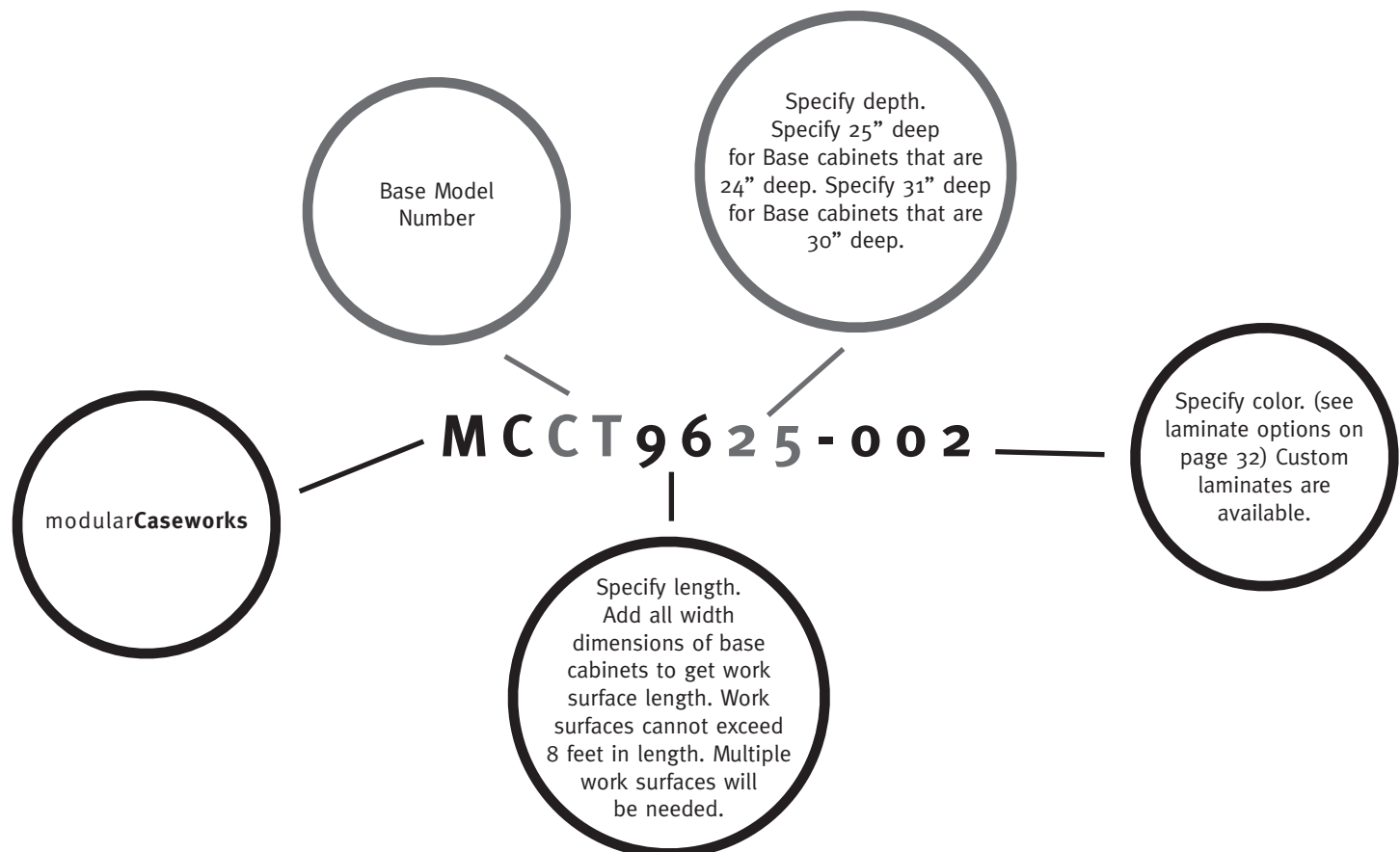
Other surfaces are available such as:

- ◆ Chemical resistant
- ◆ Anti-static
- ◆ Marmoleum
- ◆ Tuff surface
- ◆ Resin tops
- ◆ Stainless steel
- ◆ Solid surfacing
- ◆ Wood butcher block

*Call for availability and costs of other work surfaces.

Work surfaces are attached by wood screws (supplied) through the nailer strips on the top of the base cabinets.

How to Specify Your Options

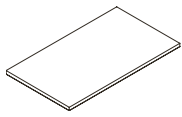


All work surfaces orders must be accompanied with a floor plan to ensure proper lengths and overhangs. This will be calculated for you at the manufacturing plant.

Work Surface Products

For 24" and 30" Deep Cabinets (cont.)

For 24" and 30" Deep Cabinets



MCCT

MODEL #	LENGTH	DEPTH	WEIGHT
MCCT1225	12	25	13
MCCT1231	12	31	15
MCCT1525	15	25	15
MCCT1531	15	31	18
MCCT1825	18	25	17
MCCT1831	18	31	20
MCCT2125	21	25	19
MCCT2131	21	31	23
MCCT2425	24	25	22
MCCT2431	24	31	26
MCCT3025	30	25	26
MCCT3031	30	31	31
MCCT3325	33	25	28
MCCT3331	33	31	34
MCCT3625	36	25	31
MCCT3631	36	31	37
MCCT3925	39	25	33
MCCT3931	39	31	40
MCCT4225	42	25	35
MCCT4231	42	31	42
MCCT4525	45	25	37
MCCT4531	45	31	45
MCCT4825	48	25	39
MCCT4831	48	31	48
MCCT5125	51	25	42
MCCT5131	51	31	51

MODEL #	LENGTH	DEPTH	WEIGHT
MCCT5425	54	25	44
MCCT5431	54	31	53
MCCT5725	57	25	46
MCCT5731	57	31	56
MCCT6025	60	25	48
MCCT6031	60	31	59
MCCT6325	63	25	50
MCCT6331	63	31	62
MCCT6625	66	25	53
MCCT6631	66	31	64
MCCT6925	69	25	55
MCCT6931	69	31	67
MCCT7225	72	25	57
MCCT7231	72	31	70
MCCT7525	75	25	59
MCCT7531	75	31	73
MCCT7825	78	25	62
MCCT7831	78	31	75
MCCT8125	81	25	64
MCCT8131	81	31	78
MCCT8425	84	25	66
MCCT8431	84	31	81
MCCT8725	87	25	68
MCCT8731	87	31	84
MCCT9025	90	25	70
MCCT9031	90	31	86
MCCT9325	93	25	72
MCCT9331	93	31	88
MCCT9625	96	25	75
MCCT9631	96	31	92

Custom Surfaces

The model numbers above represent the standard High Pressure Laminate surface. For special surfaces, add the corresponding letter to the end of the model number and add the appropriate cost (square foot of surface x cost per square foot) to the standard price.

Example: MCCT7225C = 72"x25" work surface with Chemsurf laminate and 2mm PVC edge band.

Add "C" after number for Chemsurf (chemical resistant laminate).

Add "M" after number for Marmoleum (bacterial resistant linoleum).

Add "H" after number for High Ware (5 x the abrasion/scuff resistant laminate).

Back Splash

Construction

Back splashes are used to protect walls and to hide gaps caused by bowed or unsquare walls. They are constructed of 1 1/16" thick high-pressure laminate (HPL) with industrial grade 40-50 lb. sub-strate backed with a .027 phenolic backer. When available, back splashes are edged with 1.5mm impact resistant PVC edgebanding.

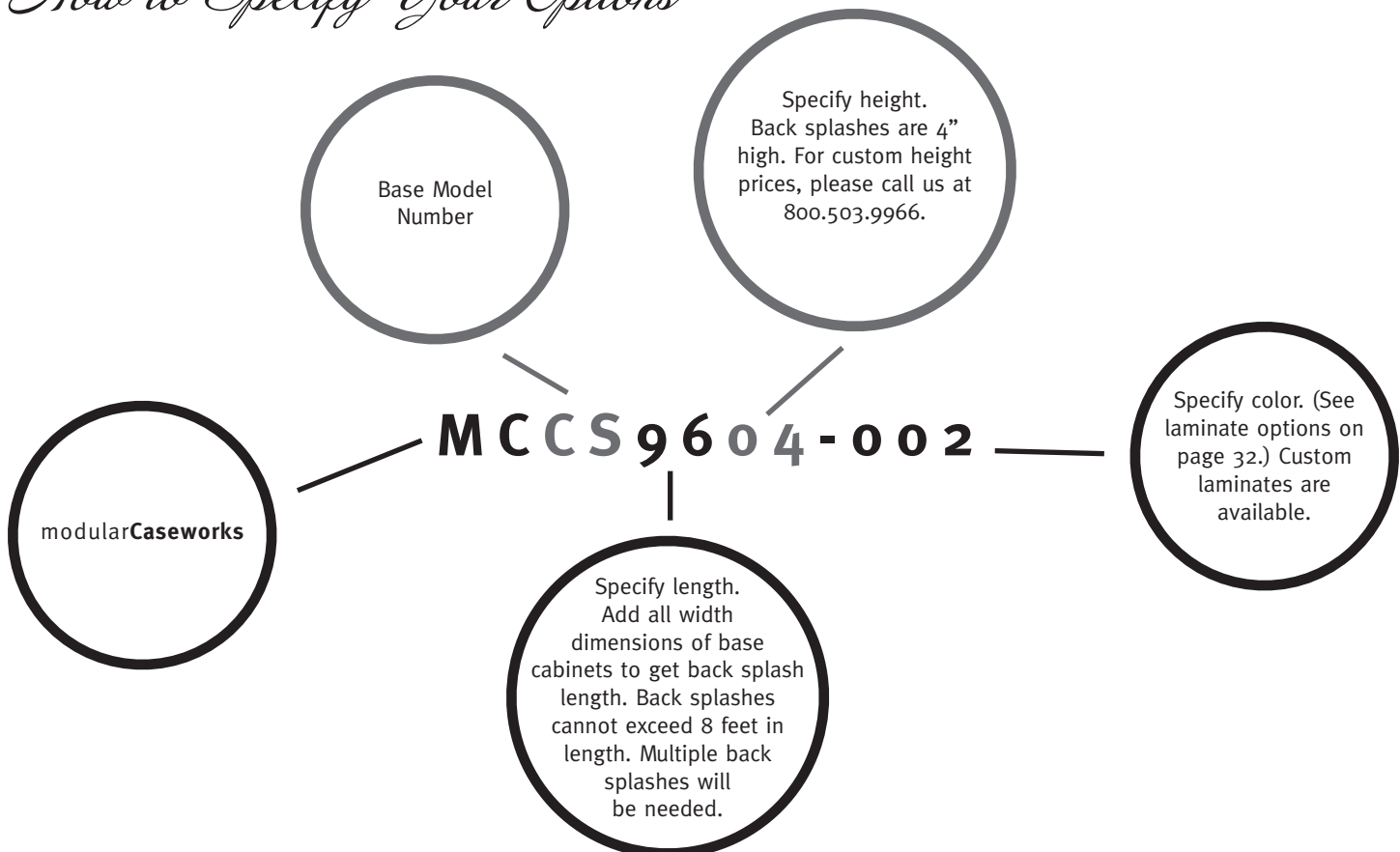
Other back splashes are available to match work surfaces such as:

- ◆ Chemical resistant
- ◆ Anti-static
- ◆ Marmoleum
- ◆ Tuff surface
- ◆ Resin tops
- ◆ Stainless steel
- ◆ Solid surfacing
- ◆ Wood butcher block

*Call for availability and costs of other materials.

Back splashes are attached by installation crew. Suggested means of attaching are contractor grade adhesive like liquid nail (supplied by installer).

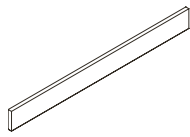
How to Specify Your Options



All back splash orders must be accompanied with a floor plan to ensure proper lengths and overhangs. This will be calculated for you at the manufacturing plant.

Back Splash Products

For 24" and 30" Deep Cabinets



MCCS

MODEL #	LENGTH	DEPTH	WEIGHT
MCCS1204	12	4	5
MCCS1504	15	4	6
MCCS1804	18	4	6
MCCS2104	21	4	6
MCCS2404	24	4	7
MCCS3004	30	4	8
MCCS3304	33	4	8
MCCS3604	36	4	8
MCCS3904	39	4	9
MCCS4204	42	4	9
MCCS4504	45	4	9
MCCS4804	48	4	10
MCCS5104	51	4	10
MCCS5404	54	4	10
MCCS5704	57	4	11
MCCS6004	60	4	11
MCCS6304	63	4	11
MCCS6604	66	4	12
MCCS6904	69	4	12
MCCS7204	72	4	13
MCCS7504	75	4	13
MCCS7804	78	4	13
MCCS8104	81	4	14
MCCS8404	84	4	14
MCCS8704	87	4	14
MCCS9004	90	4	15
MCCS9304	93	4	15
MCCS9604	96	4	15

Custom Surfaces

The model numbers above represent the standard High Pressure Laminate surface. For special surfaces, add the corresponding letter to the end of the model number and add the appropriate cost (square foot of surface x cost per square foot) to the standard price.

Example: MCCS7225C = 72"x4" work surface with Chemsurf laminate and 2mm PVC edge band.

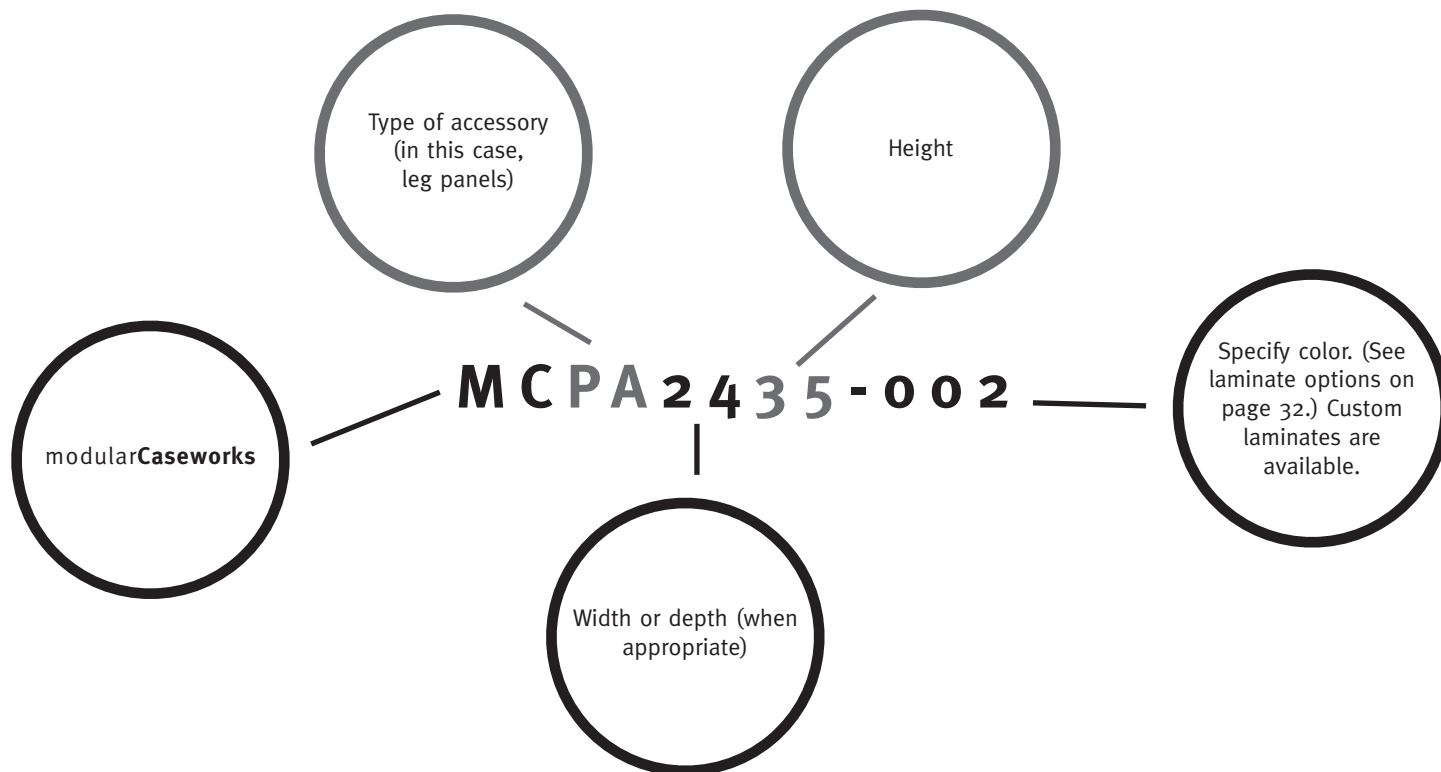
Add "C" after number for Chemsurf (chemical resistant laminate).

Add "M" after number for Marmoleum (bacterial resistant linoleum).

Add "H" after number for High Ware (5 x the abrasion/scuff resistant laminate).

Accessories

How to Specify Your Options



Selecting the Base Cabinet & Work Surface Accessories

Leg Panels & Radius Leg Panels Used to support work surfaces where no cabinet is desired. Pick the appropriate height and depth to match your work surface. Floor plan layouts must be submitted.

15" & Full Back Panels Used to support work surfaces where no cabinet is desired. Can be mounted to leg panels as well. Floor plan layouts must be submitted.

Base Cabinet Corner Filler Package Used to support work surfaces and to fill gaps created in L and U-shaped installations. See how to calculate corners on page 20. Floor plan layouts must be submitted.

Base Cabinet End Filler Used to support work surfaces and to fill gaps between the edge of base cabinets and walls where desired. Floor plan layouts must be submitted.

Adjustable Keyboard Tray and Tray with Mouse Made to mount under a work surface. Mark floor plan with locations.

Selecting the Wall Cabinet Accessories

Wall Cabinet Corner Filler Used to fill gaps created in L and U-shaped installations between adjacent wall cabinets. See how to calculate corners on page 21. Floor plan layouts must be submitted.

Wall Cabinet Filler Used to fill gaps between the edge of wall cabinets and walls where desired. Floor plan layouts must be submitted.

Shelves Used to add additional adjustable shelves to units

- ◆ MCPS – Adjustable shelf for base cabinets
- ◆ MCPS – Adjustable shelf for wall cabinets
- ◆ RMS – Adjustable polyethylene module shelves
- ◆ WRMS – Adjustable wood modules shelves

Selecting Electrical, Grommet & Lighting Accessories

Task Lights All wall cabinets have 2” fascias that conceal task lights. Color: Black

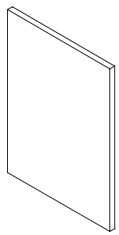
Retractable Power Center Are pop up convenience outlet with 3 receptacles. Specify location on work surface. Don't forget to add a grommet (MCCBLO-3) in the back panel or bottom shelf to allow cord to plug in.

Grommet 3-1/4” round grommet made for cable management. Specify location in work surface, side, shelves or back.

Paper Slot 10” and 13” slot with grommet made for paper and cables. Specify location in work surface, side, back or door panel

Accessory Products

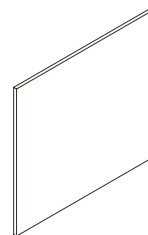
Leg Panels



MCPA

MODEL #	WIDTH	HEIGHT	WEIGHT
MCPA2429	24	29	15
MCPA2433	24	33	16
MCPA2435	24	35	17
MCPA3029	30	29	18
MCPA3033	30	33	20
MCPA3035	30	35	21

Full Height Back Panels



MCPD

MODEL #	WIDTH	HEIGHT	WEIGHT
MCPD3029	30	29	18
MCPD3033	30	33	20
MCPD3035	30	35	21
MCPD3629	36	29	21
MCPD3633	36	33	24
MCPD3635	36	35	26
MCPD4229	42	29	25
MCPD4233	42	33	28
MCPD4235	42	35	30

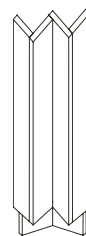
Angled Leg Panels



MCPB

MODEL #	WIDTH	HEIGHT	WEIGHT
MCPB2429	24	29	14
MCPB2433	24	33	15
MCPB2435	24	35	16
MCPB3029	30	29	17
MCPB3033	30	33	19
MCPB3035	30	35	20

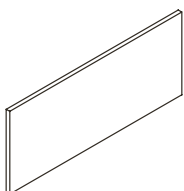
Base Cabinet Corner Filler



MCPE

MODEL #	WIDTH	HEIGHT	WEIGHT
MCPE2429	24	29	9
MCPE2433	24	33	10
MCPE2435	24	35	11
MCPE3029	30	29	9
MCPE3033	30	33	10
MCPE3035	30	35	11

15” High Back Panels



MCPC

MODEL #	WIDTH	HEIGHT	WEIGHT
MCPC3015	30	15	9
MCPC3615	36	15	11
MCPC4215	42	15	13

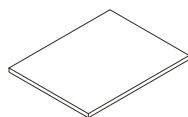
Base Cabinet End Filler



MCPF

MODEL #	WIDTH	HEIGHT	WEIGHT
MCPFo429	4	29	3
MCPFo829	8	33	5
MCPFo433	4	35	4
MCPFo833	8	29	6
MCPFo435	4	33	5
MCPFo835	8	35	7

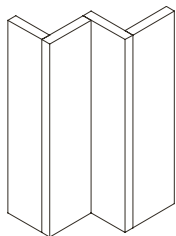
Adjustable Shelves for Cabinets



MCPS

DESCRIPTION	WEIGHT
Shelf options should be added at the end of the model #. Choose B for Base cab	15
Choose S for Storage cab	15
Choose W for Wall cab	15

Wall Cabinet Corner Filler



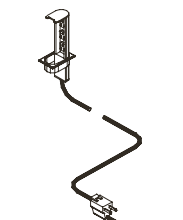
MCPG

MODEL #	WIDTH	HEIGHT	WEIGHT
MCPG1430	14	30	8
MCPG1436	14	36	10
MCPG1830	18	30	8
MCPG1836	18	36	10

Task Lighting

MODEL #	WIDTH	DEPTH	HEIGHT
MRUSTL-24	24	7	1.5

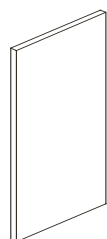
Retractable Power Center



MRRPC-3

MODEL #	WEIGHT
MRRPC-3	2

Wall Cabinet Filler



MCPH

MODEL #	WIDTH	HEIGHT	WEIGHT
MCPHo418	4	18	3
MCPHo818	8	18	5
MCPHo424	4	24	3
MCPHo824	8	24	5
MCPHo430	4	30	3
MCPHo830	8	30	5
MCPHo436	4	36	5
MCPHo836	8	36	7

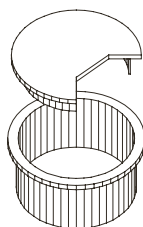
Paper Slot with Oval Grommet

MODEL #	WIDTH	HEIGHT	WEIGHT
MRSLOT-10	10	1-1/2	1
MRSLOT-13	13	2	1

Adjustable Keyboard Tray

MODEL #	WEIGHT
MRKDADJ	15
MRKDADJM (with mouse)	16

Cable Cut Out and Round Grommet with Cover



MRCBLCO-3

MODEL #	WIDTH	WEIGHT
MRCBLCO-3	3-3/4	1

Selecting the Sorter Shelves Accessories

Hamilton's unique shelving systems provides easy shelf adjustability in 1" increments on full depth shelf supports and are available in Standard (for 8-1/2" x 11" documents) Legal (for 8-1/2" x 14" documents) or Oversize (for large forms up to 12-3/4" w x 15" d).

Shelf Supports are made of durable plastic available in Black, Brown, Gray and Transparent.

RMSxx Shelves are made from a flexible .90-gauge polyethylene plastic and are rated to hold up to 35 lbs and are available in Black, Brown, Gray and Transparent.

WRMSxx Shelves are made of 5/8" thick laminate and are rated to hold up to 50 lbs and are available in any of our standard laminates and edge banding.

All shelves have full width index channels, both front and rear; and the indexing is protected with a clear index cover.

INDX-x Color Coded Index Strips come 18 strips per sheet and are available in 10 colors:

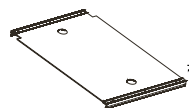
Green	Light Green
Magenta	Electric Yellow
Canary	Blue
Orange	White
Gold	Electric Pink

When ordering Sorter base, wall cabinets and shelves a mixture of colors will be selected. If you would like a specific color please specify.

Indexing Templates (in word) are downloadable free of charge at www.hamiltonsorter.com, or contact Customer Service at 800.503.9966 for more information.

Sorter Shelf Products

Sorter Shelves



Shelves available in gray, black, brown, and transparent

MODEL #	DESCRIPTION	WIDTH	DEPTH	WEIGHT
RMS10	Standard Size	10-3/4	11-3/4	1
RMS10-5	Standard Size 5-pk	10-3/4	11-3/4	3
WRMS10	Std. Size Laminate	10-3/4	11-3/4	2
RMS14	Legal Size	10-3/4	15-3/4	1
RMS14-5	Legal Size 5-pk	10-3/4	15-3/4	3
WRMS14	Leg. Size Laminate	10-3/4	15-3/4	2
RMS12	Over Size	12-3/4	15-3/4	1
RMS12-5	Over Size- 5-pk	12-3/4	15-3/4	3
WRMS12	Over Size Laminate	12-3/4	15-3/4	2

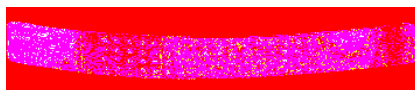
Indexing

MODEL #	DESCRIPTION
INDX-S	10 sheets of indexing for Standard and Legal
INDX-O	10 sheets of indexing for Oversize

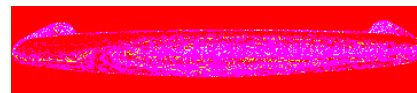
Handles



Elliptical EL



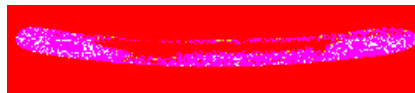
Textured Crescent TC



Flaired Crescent FC



Crescent - Black CB



Crescent-Nickel CN

Laminates

Standard Colors

COLOR NAME	NUMBER	WORK SURFACE	BASE AND VERTICALS	EDGE BANDING	BRAND NAME & NUMBER
Antique White	013	◆	◆	◆	Wilsonart 1572-60
Natural Almond	031	◆	◆	◆	Wilsonart D30-60
Grey Moss	090	◆	◆	◆	Wilsonart 15008
Fashion Grey	035	◆	◆	◆	Wilsonart D381-60
Dove Grey	002	◆	◆	◆	Wilsonart D92-60
Slate Grey	068	◆	◆	◆	Wilsonart D91-60
Shadow	096	◆	◆	◆	Wilsonart D96-60
Ingot Grey	006	◆	◆	◆	Pionite SG211-S
Black	007	◆	◆	◆	Wilsonart 1595-60
Graphite Nebula	030	◆	◆	◆	Wilsonart 4623-60
Canyon Zephyr	093	◆	◆	◆	Wilsonart 4842-60
Kensington Maple	036	◆	◆	◆	Wilsonart 10776-60
Solar Oak	089	◆	◆	◆	Wilsonart 7816-60
Hampton Maple	098	◆	◆	◆	Wilsonart 11044
Oiled Cherry	055	◆	◆	◆	Pionite WC421-S
Empire Mahogany	078	◆	◆	◆	Wilsonart 7122T-60
Windsor Mahogany*	001	◆	◆	◆	Wilsonart 7039-60
Woodlawn Cherry	003	◆	◆	◆	Casco H1209
Cognac	091	◆	◆	◆	Nevamar Dynea 4511
Shaker Cherry	097	◆	◆	◆	Wilsonart 7935-7
Cafelle	099	◆	◆	◆	Wilsonart 7933T-07

These laminate colors are available at standard prices. Special laminates available, call for pricing.

Designer Worksurface Colors

COLOR NAME	NUMBER	WORK SURFACE	BASE AND VERTICALS	EDGE BANDING	BRAND NAME & NUMBER
White Nebula	086	◆		◆	Wilsonart 4621-60
Desert Zephyr	095	◆		◆	Wilsonart 4841-60
Twilight Zephyr	092	◆		◆	Wilsonart 4845-60
Misted Zephyr	094	◆		◆	Wilsonart 4843-60

These laminate colors are available only for work surfaces at standard prices, call for pricing to use on vertical surface.

Limited Lifetime Warranty

Hamilton Sorter Co., Inc. ("Hamilton Sorter") warrants to the original retail purchaser that Hamilton Sorter Mail Center products (the "Hamilton Sorter Products") purchased on or after January 1, 1996 will be free from defects in material and workmanship for as long as the original retail purchaser owns such Hamilton Sorter Product, except for the following Hamilton Sorter Products which are warranted for three years from the date of purchase as shown on the purchaser's receipt: task lights, adjustable keyboards and module shelf standard as well as any powdercoated item. This warranty is made solely to the original retail purchaser and shall be effective from the date of purchase as shown on the purchaser's receipt. This warranty is void for any damages to the Hamilton Sorter Product due to misuse, abuse, neglect, accident, improper installation, failure to comply with instructions furnished by Hamilton Sorter or any repair or alteration performed by anyone other than Hamilton Sorter or an authorized Hamilton Sorter dealer. Damage caused by common carrier during shipment is not included in this warranty.

Workrooms

Mail Centers

Copy Centers

Reception Stations

Exam Rooms

Pantries



modularCaseworks

LIFETIME WARRANTY

3158 Production Drive
Fairfield, Ohio 45014
p 800.503.9966
f 800.503.9963
www.hamiltonsorter.com

