



*Assembled  
box lockers*



# C + P assembled box lockers: Quality from the market leader

The C+P company belongs to the Christmann and Pfeifer Group, which was set up in 1925 and is represented in many European countries. C+P is today one of the leading manufacturers in Europe and is the German **market leader for assembled box lockers and lockers made of steel.** Thanks to continuous innovation, constant investment and products

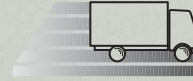
geared to market requirements, C+P stands for quality and competence. Through our extensive know-how, our customers can rely on optimum solutions. Annually we manufacture over 300,000 compartments in many product series as well as special models for every application!



Many of our products have been tested for safety (GS) by the Technical Inspection Agency of Thuringia (TUV Thüringen). We will be glad to send you copies of the corresponding certificates on request.



The proven material steel is fully recyclable. Thus, C+P steel furniture provides for an ecological work environment. Not to mention the cost savings for disposal.



Every week 80 furniture trucks leave our manufacturing facilities. Our optimized, computer-aided route management system guarantees punctual deliveries.



**Box sizes for every need:** Whether only the purse and the cellphone or the sport bag and motorcycle helmet are to be locked away, C+P has the right model and size.



**Base frames and fronts for every need:** Feet, plinth or wall-mounted version? Steel or decor fronts? Irrespective of the decision – C+P has the professional solution!



**Locking systems for every requirement:** From the turning bolt latch to the cylinder lock; from the coin deposit lock to the electronic locking system – C+P has all the options on hand.



## *If you have something to lock away ...*

... then you will certainly find the right lockers for it at C+P.  
More tips on this on pages 4-5 and 18-19.

### **C + P assembled box lockers:**

**Quality from the market leader** Page 2 - 3

### **You should bear in mind the following:**

**Examples from practical operations** Page 4 - 5



#### **Classic**

The timeless basic range –  
complete and competent

Page 6 - 7



#### **Intro**

The sturdy classic lockers  
with many box sizes

Page 8 - 10



#### **Resisto**

The “vandal-proof” assembled box lockers  
with special doors

Page 11



#### **Evolo**

The evolution of a classic –  
with great advantages

Page 12 - 13



#### **Cambio**

Optimum design and technology –  
for high demands

Page 14 - 15

### **Locking systems**

Page 16 - 17

**You will find the right one here!** Page 18 - 19



## *You should bear in mind the following: Examples from practical operations*

### **1. Schools and kindergartens**

This is where things get boisterous! Anger about a poor exam mark might be turned into kicking the locker door. Clear case for Resisto from C+P – with “vandal-proof” doors.



### **2. Event arenas and trade fairs**

Here matters need to be dealt with quickly and at low cost – preferably without outlay on both providing information and staff. This is where the tried-and-tested deposit and token-operated locks show their qualities.



### 3. Sport and fitness centers

Needs here put demands on the most varied of box sizes: from the double tier lockers up to the small compartment locker. Most frequently used are integrated electronic locking systems.



### 4. Office and Administration

High-grade, suitable solutions are in demand in the office. Cabinets with alternate front concept such as Evolo and Cambio can easily integrate the requested surfaces.



### 5. Shopping centers and retail parks

This is where assembled box lockers need to be stable and easy to operate. They should function reliably without supervision – like, for instance, the C+ P series Intro with twin coin deposit locks.



# Classic <sup>S 2000</sup>

## The timeless basic range

The S 2000 Classic complete range from C+P has more to offer than you can usually expect. Why? Because as the leading producer, we strive to keep one jump ahead at all times. No matter whether the ventilation concept, the underbench solutions, the accessory range or the lock variants are concerned: S 2000 Classic sets new standards in the basic class.



The classic range provides continuous and double tier lockers (see illustration above) fitted out with standard turning bolt latches for padlocks. The assembled box lockers (see illustration left) have three, four or five compartments one above the other. Every compartment has a cylinder lock with 2 keys. 300 or 400 mm compartment widths can be selected.



Order No. 8320-30

**Double tier locker** on plinth with cylinder locks and number plates as additional fittings,  
Dimensions (H x W x D in mm):  
1800 x 900 x 500

**Locker feet made of plastic**  
= greater protection of the locker against corrosion,  
(Feet height can be adjusted)





Order No. 8010-404

**Locker with 16 compartments,**  
with 150 mm high feet,  
Dimensions (H x W x D in mm):  
1850 x 1190 x 500



Order No. 8010-205

**Locker with 10 compartments,**  
with 150 mm high feet,  
Dimensions (H x W x D in mm):  
1850 x 610 x 500



Perfect for use in and  
around offices. The  
assembled box lockers  
of these open coat racks  
are equipped with  
double-walled doors  
and available in two  
box sizes.



Order No. 80710-00

**Open coat rack for 10 persons,** consisting of 2 assembled  
box lockers, top shelf in between, hat rack with 10 coat  
hangers and shoe rack.  
Dimensions (H x W x D in mm) 1950 x 1430 x 480



Order No. 80700-20 (slim cabinet)  
Order No. 82700-20 (wide cabinet)

**Cabinets each with 10 compartments,** in normal and  
double width models. Dimensions (H x W x D in mm) :  
1950 x 460 x 480 or 1950 x 900 x 480

# Intro <sup>S 4000</sup>

## The sturdy ones with many box sizes

Everyone has his/her own compartment. For permanent use or changing assignment. With cylinder locks, coin-operated locks or electronic locking systems. For key ring and cellphone, sport bag, motorcycle helmet or shopping basket/bag. S 4000 Intro has what is right for every purpose.



Order No. 8370-201  
**Assembled box locker with 6 compartments,**  
 comp. width 300 mm  
 Dimensions (H x W x D in mm):  
 1950 x 610 x 490



Order No. 8370-203  
**Assembled box locker with 6 compartments,**  
 comp. width 400 mm  
 (suitable for motorcycle helmets) extra deep  
 Dimensions (H x W x D in mm):  
 1950 x 820 x 590



Order No. 8370-302  
**Assembled box lockers with 9 compartments,** comp. width 400 mm  
 (suitable for motorcycle helmets), Dimensions (H x W x D in mm): 1950 x 1220 x 490





Order No. 8570- 303 (left) / 8470- 303 (right)

**Assembled box lockers with 15 or 12 compartments**, comp. width 400 mm (suitable for motorcycle helmets) extra deep, with coin-operated locks, Dimensions (H x W x D in mm): 1950 x 1220 x 590



Order No. 8270-401 (left) / 8370-302 (right)

**Assembled box lockers with 8 or 9 compartments**, comp. width 300 / 400 mm, with key plate, Dimensions (H x W x D in mm): 1950 x 1220 x 590



**Examples of practical small compartment and safe deposit box lockers:**



The space-saving **small compartment locker** is just right if you only have small things to lock away.



Thanks to the shortened doors, the **safe deposit box locker** provides the ideal combination of easy loading and assured unloading by the authorized user.

*Intro* <sup>S 4000</sup>

## The "short ones" for the small ones

The following also applies to schools and kindergartens: things that are safely locked away cannot get lost. It is the smallest children, above all, who need special cabinets where each compartment can be easily reached. These S 4000 series Intro cabinets have an ideal height – with a hard-wearing decor cover plate on top.



Order No. 8573-201  
**Assembled box locker  
with 6 compartments,**  
Dimensions (H x W x D in mm):  
1255 x 620 x 490



Order No. 8573-301  
**Assembled box locker  
with 9 compartments,**  
Dimensions (H x W x D in mm):  
1255 x 920 x 490



*Resisto* <sup>S 5000</sup>

**Ideal for schools – the “vandal-proof” assembled box lockers**

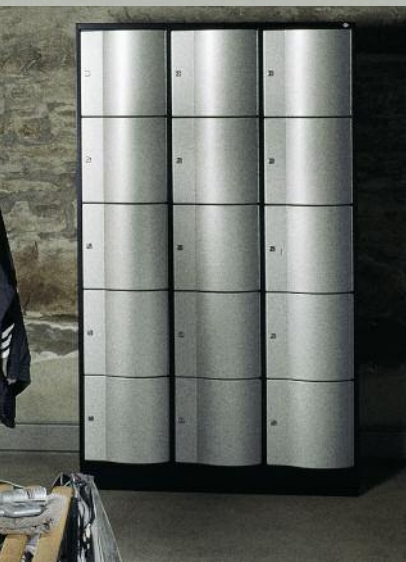
Assembled box lockers in schools and in public-access areas have a lot to put up with. The C+P S 5000 Resisto series has been created to this end. After all, its special doors look good and can easily withstand even hefty kicks! Resisto also has a level adjustment which can easily be set from the inside to offset floor unevenness.



The convex form of the special doors made of 1.5 mm thick steel results in excellent door stability. That is why they are absolutely sturdy and “vandal-proof”



Lots of storage space for the most varied of applications. There is even room for a motor-cycle helmet in the compartments.



Large illustration at top:  
Order No. 8573- 272 (green doors) / 8573- 372 (yellow doors)

**Assembled box lockers with 6 or 9 compartments,**  
with key plate,  
Dimensions (H x W x D in mm): 1255 x 770/1150 x 540

Illustration – left: Order No. 8570-372

**Assembled box lockers with 15 compartments,**  
Dimensions (H x W x D in mm): 1950 x 1150 x 540  
(also available with a 640 mm depth)

Illustration on right: Order No. 8571- 00

**Open coat rack for 10 persons,**  
consisting of 2 assembled box lockers, hat rack  
in between with 10 coat hangers and shoe rack.  
Dimensions (H x W x D in mm): 1950 x 1742 x 540

# Evolo <sup>S 3000</sup>

*The evolution of a classic!*

Assembled box lockers are boring and unattractive? Not in our range! With its clear lines, attractive coatings and optional MDF decor doors, the S 3000 Evolo provides that premium look together practical technologies – and at competitive prices.



→ **Increased burglar-proofness thanks to extremely warp resistant doors** due to closed profiles on the sides, doorstop silencers as standard fitting





**Exchangeable fronts** (can also be fitted later!) choice of steel or decor doors (MDF)

**Integrable numbering** (optional) with self-adhesive film in the embossed label frame

**The novel feet made of plastic** (= improved protection of the locker against corrosion!) consistently underpin the linear design and have a protective sleeve that covers the adjusting screw when the optional height adjustment is used. An ingenious feature!



**Practical example – Laundry collecting and dispensing lockers (see Illustration on right):**

These models blend in uniformly into every Evolo locker unit. The collecting locker works simply with a swinging flap and a laundry bag hung inside. Thanks to the practical central door on the dispensing locker, the laundry service has an easy time loading it. On the other hand when the central door is locked, users can only open their own compartment.

Many more industry and special solutions in various designs and dimensions can be found in the Evolo complete range.



Order no. 48170-210: **Laundry collecting locker**  
 Order no. 48160-205: **Laundry dispensing locker with 10 compartments**  
 Dimensions (H x W x D in mm): 1950 x 420 x 500 or 1950 x 810 x 500



Order No. 48010-304  
**Cabinet with 12 compartments**  
 Dimensions (H x W x D in mm): 1850 x 900 x 500



Order No. 48410-00 +4840-20  
**Open coat rack for 10 persons with plinth,**  
 Dimensions (H x W x D in mm): 1850 x 1590 x 500

# S 6000 Cambio

## – Can do more than others!

It makes a big difference whether furniture is only “put” in a room – or whether the furnishing becomes a part of the overall interior design. Cambio has what it takes to fit in harmoniously with the desired surroundings. The locker fronts and the way the lockers are set up play a substantial role. Innumerable modular variation options in material, design and color can be used to create truly unique interior designs.



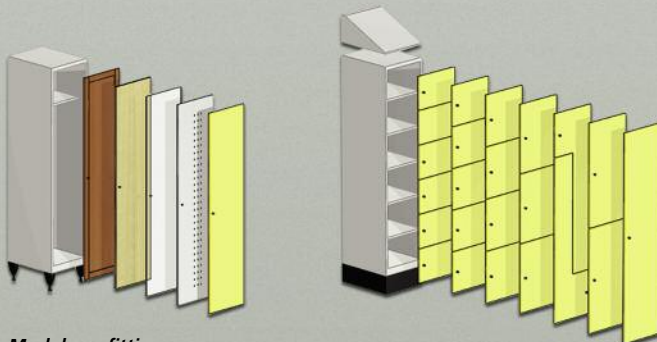
The feet adjustable in height from 150 to 190 mm can be adjusted from the inside and outside



The insulation of the door is sealed on all sides and thus 100% moisture-proof



All decor doors are made of HPL (High Pressure Laminate) full core/compact boards



### Modular refitting

Cambio is designed so that you can adapt all compartment sizes and layouts to your requirements and even change them later. This is ensured by an ingenious system carcass and a wide range of compartment sizes and door materials.

### Use of space and interior design

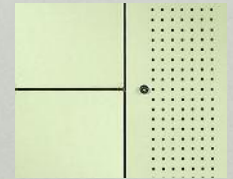
Thanks to inside and outside corner solutions, shelf elements as well as the use of niches and front ends (e.g. as a dressing table), Cambio achieves an effective use of space and an unmatched spacious effect!





**Possible door materials**

With Cambio you will find the right solution for all requirements and demands:



Steel (on the right with square holes)



HPL decor



Acrylic glass (here satined)



Stainless steel



Real wood veneer



Leather (with MDF core)



Wall-mounted Cambio small safe deposit box unit with electronic locking system integrated with the Cambio lockers into the complete building automation

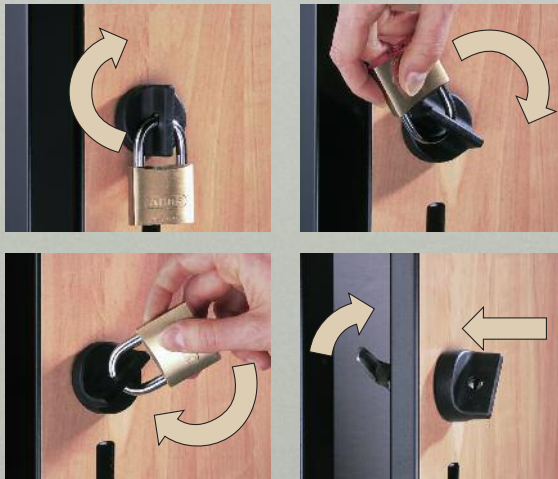
## Mechanical locking systems

C+P provides you with the entire range of mechanical locking systems. The cylinder lock with two keys is the basic fitting for all lockers (from three compartments one above the other). Depending on use, turning bolt latches, combination locks and coin-operated locks can be integrated into all locker series. Brief descriptions of the locking systems are on this page.



### SAFE-O-MAT deposit-operated lock

The best-selling classic among coin-operated locks. Available with traditional master key system or with the innovative PROMAX replaceable cylinder system. The practical twin coin function means the user has the choice of two deposit coins and thus has practically always the right coin



The problem:

**There is an increased break-in risk with conventional turning bolt latches from the lock being overwound.** The picklock can use the padlock as a lever (the longer the lock shackle, the greater the leverage). Overwinding destroys the locking mechanism and opens the way to the locker compartment.

The C+P solution:

**The C+P safety turning bolt cannot be overwound since it "spins" when locked – thus preventing tampering!** Only when the padlock is removed does the locking cylinder snap and the door can be opened by simply turning the lock head.



### Cylinder lock

Every lock is supplied with 2 keys. Master key systems are available with and without security certificate for more safety and convenience



### Key and number plate

The door plate (available in black or silver) is used as door protection and for easy self attachment of the number plate with up to a 3-digit number



### Turning bolt latch

This ergonomically designed turning bolt for padlocks has a standard door guard. Suitable for padlocks with a shackle thickness of up to 6 mm



**Mechanical combination lock** with 4-digit, individually adjustable combination. Sturdy cast iron housing for a long service life. "Spinning" mechanisms (as with safety turning bolt), scrambling and master key function



**SAFE-O-PIN lock**  
as simple-to-operate "mental lock"; functions without key or data carrier



The SAFE-O-MAT token-operated locks also have a twin-coin function. While the token is kept as the charge for lock use, the deposit coin is there for the user to open the compartment as often as he wants free of charge.

A practical solution!



## Electronic locking systems

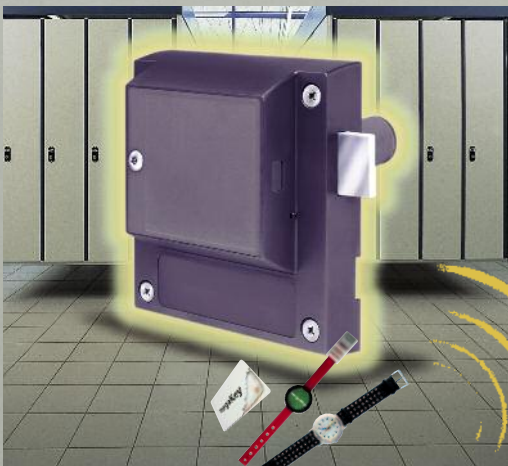


**GAT LOCK**



**PDN TECHNOLOGY**  
CONTACTLESS PORTABLE DATA NETWORK

Apart from mechanical locking systems, **electronic locking systems** have become increasingly important in recent years - either as a stand-alone solution or as part of complete building automation. In the latter instance, the locking systems either operate independently or networked complete with admission control terminals, time recording and pay machines - but of course connected with the data carrier. This carrier is available in the most varied of forms: as chip, card, stick or wristwatch.



**SAFE-O-TRONIC®**



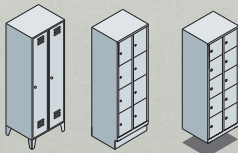


## This is the easy and quick way to finding the right assembled box locker

You can easily establish which cabinet is the right one for which location on the basis of various factors. For orientation purposes there are short descriptions of the series and a suitability overview on this double page. You can bet our range has the right one for you.

### Product series

### Brief description

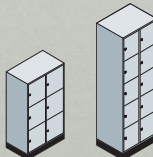


*Classic* S 2000

#### The timeless basic range

Special features:  
 – Favorably priced complete range  
 – Classic design

Compartment widths: 300 and 400 mm  
 Compartments next to each other: 1-5  
 Boxes one above the other: 1-5  
 Doors: steel

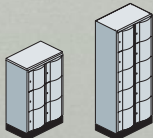


*Intro* S 4000

#### The sturdy ones with many box sizes

Special features:  
 – The most technical dimensions  
 – Some doors double-walled  
 – Extra depth 590 mm

Compartment widths: 300 and 400 mm  
 Compartments next to each other: 1-4  
 Boxes one above the other: 1-6  
 Doors: steel

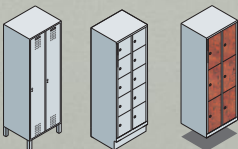


*Resisto* S 5000

#### The "vandal-proof ones"

Special features:  
 – Special doors made of 1.5 mm steel  
 – "Vandal-proof" school locker  
 – Extra depth 640 mm

Compartment width: 350 mm  
 Compartments next to each other: 1-3  
 Boxes one above the other: 3+5  
 Doors: steel

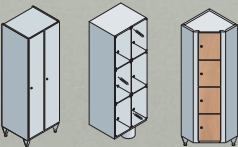


*Erolo* S 3000

#### The evolution of a classic

Special features:  
 – Attractive complete range  
 – Development of the basic class  
 – Alternate front concept

Compartment widths: 300 and 400 mm  
 Compartments next to each other: 1-5  
 Boxes one above the other: 1-5  
 Doors: steel or MDF decor



*Cambio* S 6000

#### The optimum in design and technology

Special features:  
 – Top range with system carcass that can be changed later  
 – Practically unlimited scope for design and interior fittings!

Compartment widths: 300 and 400 mm  
 Compartments next to each other: 1-4  
 Boxes one above the other: 1-6  
 Doors: steel, decor, real wood, leather, glass

#### More information needed?

You can find everything worth knowing about the C+P assembled box lockers in the product series brochures and the current basic catalog – the manual for furniture systems. They also include more about other C+P furnishing ranges.

Do ask for your personal copy with many furnishing examples from the practical experience of a market leader!



Schools	Kindergartens	Day care centers	Event arenas	Trade fairs	Museums	Libraries	Shopping malls	Retail parks	Leisure centers	Fitness centers	Sports centers	Hotels	Offices	Industry	Clinics	Craft businesses
○	○	○	◐	◐	◐	○	○	◐	◐	◐	◐	○	○	●	◐	●
◐	●	●	●	●	●	◐	●	●	●	●	●	●	◐	◐	●	◐
●	●	●	●	●	●	●	●	●	●	●	●	●	◐	◐	●	◐
○	○	◐	●	●	●	◐	◐	◐	●	●	●	●	●	●	●	●
○	○	◐	◐	◐	●	●	◐	◐	●	●	●	●	●	●	●	◐



- = less suited
- ◐ = suited to some extent
- = optimally suited



*Furniture for people*

